

# Quick-fitting Type Vacuum Pad Vacuum Pad Soft Type

## Features

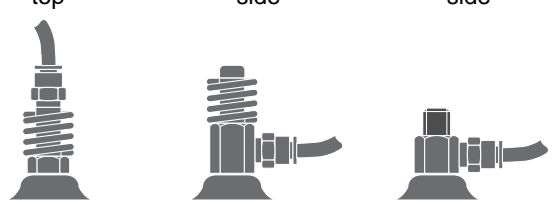
- The pad rubber displaying an excellent elasticity, this vacuum pad can hold plastic products without leaving any marks.
- ◆ Pad dia :  $\phi 4\sim\phi 40\text{mm}(0.16\sim 1.57\text{in.})$
- ◆ Pad materials : Nitrile rubber, Silicon rubber and fluorosilicon rubber
- ◆ Holder shape : 3 types

## Model Designation (Example)

**VPHC** (1)    **40** (2)    **LN** (3)    **6J** (4)    (5)

(1) Holder type

<b>VPHC</b>	<b>VPHD</b>	<b>VPHE</b>
Spring type Vacuum port top	Spring type Vacuum port side	Direct mounting fixed type Vacuum port side



(2) Pad dia.

Code	4	6	8	10	15	20	30	40
dia. mm	$\phi 4$	$\phi 6$	$\phi 8$	$\phi 10$	$\phi 15$	$\phi 20$	$\phi 30$	$\phi 40$
dia. inch	0.16	0.24	0.31	0.39	0.59	0.79	1.18	1.57

(3) Pad type

Code	LN	LS
Material	Nitrile rubber	Silicon rubber
Code	LFS	
Material	Fluorosilicon rubber	

(4) Joint size

Joint type	Quick-fitting joint	Quick-fitting joint	Quick-fitting joint	
Code	4J	5/32J	6J	1/4J
size(O.D.×I.D.)	4mm×2.5mm (0.16×0.10in.)	$\phi 5/32\text{in.}$	6mm×4mm (0.24×0.16in.)	$\phi 1/4\text{in.}$
Pad dia	$\phi 4\text{mm}(\phi 0.16\text{in.})$	$\phi 6\text{mm}\sim\phi 40\text{mm}(\phi 0.24\sim\phi 1.57\text{in.})$		

(5) Hexagon flat-to-flat specification  
U: Hexagon flat-to-flat inch spec. (NPT)  
No code: Hexagon flat-to-flat mm spec.

## Model Designation for pad rubber

**VP** (1)    **40** (2)    **LN** (3)

(1) Type

(2) Pad dia.

Code	4	6	8	10	15	20	30	40
dia. mm	$\phi 4$	$\phi 6$	$\phi 8$	$\phi 10$	$\phi 15$	$\phi 20$	$\phi 30$	$\phi 40$
dia. inch	0.16	0.24	0.31	0.39	0.59	0.79	1.18	1.57

(3) Pad rubber material

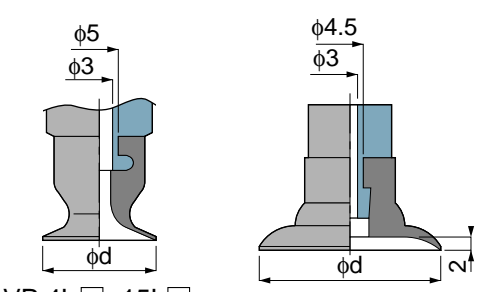
Code	LN	LS	LFS
Material	Nitrile rubber	Silicon rubber	Fluorosilicon rubber

## ⚠ Detailed safety Instructions

Before using the PISCO device, be sure to read the "Safety Instructions", "common Safety Instructions for Products Listed in This Manual" on page 23~24 and "Common Safety Instructions for Vacuum Pads on page 439~440.

## ● Pad mounting shape

unit : mm



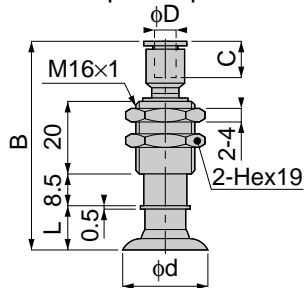
Type	Pad outer dia $\phi d$
VP 4L□	4
VP 6L□	6
VP 8L□	8
VP 10L□	10
VP 15L□	15
VP 20L□	20
VP 30L□	30
VP 40L□	40

# Vacuum Series Vacuum Pad Soft Type



## VPHC SOFT TYPE

Spring type  
vacuum port top



unit:mm

Model	Tube dia. φD	Pad dia. φd	B	L	C	Spring force (N)	Mass (g)
VPHC 4L□4J	4	4	56.5	12	11	0.98~1.76	20.5
VPHC 6L□6J	6	6	58	12	11.5	0.98~1.76	21.5
VPHC 8L□6J	6	8	58	12	11.5	0.98~1.76	21.5
VPHC 10L□6J	6	10	60	14	11.5	0.98~1.76	21.5
VPHC 15L□6J	6	15	60	14	11.5	0.98~1.76	21.5
VPHC 20L□6J	6	20	60	15	11.5	0.98~1.76	22.5
VPHC 30L□6J	6	30	60	15	11.5	0.98~1.76	24.5
VPHC 40L□6J	6	40	60	15	11.5	0.98~1.76	28.5



1

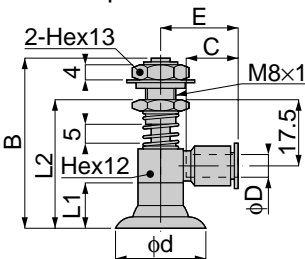


2



## VPHD SOFT TYPE

Spring type  
vacuum port side



unit:mm

Model	Tube dia. φD	Pad dia. φd	B	L1	L2	C	E	Spring force (N)	Mass (g)
VPHD 4L□4J	4	4	45	12	34.5	11	18	1.57~2.06	30.5
VPHD 6L□6J	6	6	45	12	34.5	11.5	19.5	1.57~2.06	31.5
VPHD 8L□6J	6	8	45	12	34.5	11.5	19.5	1.57~2.06	31
VPHD 10L□6J	6	10	46.5	14	36	11.5	19.5	1.57~2.06	31.5
VPHD 15L□6J	6	15	46.5	14	36	11.5	19.5	1.57~2.06	31.5
VPHD 20L□6J	6	20	47.5	15	37	11.5	19.5	1.57~2.06	33
VPHD 30L□6J	6	30	47.5	15	37	11.5	19.5	1.57~2.06	35
VPHD 40L□6J	6	40	47.5	15	37	11.5	19.5	1.57~2.06	39



1

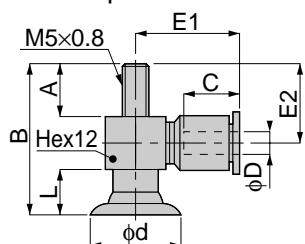


2



## VPHE SOFT TYPE

Direct mounting  
fixed type  
vacuum port side



unit:mm

Model	Tube dia. φD	Pad dia. φd	A	B	L	C	E1	E2	Mass (g)
VPHE 4L□4J	4	4	8	30	12	11	18	13	16
VPHE 6L□6J	6	6	8	30	12	11.5	19.5	13	17
VPHE 8L□6J	6	8	8	30	12	11.5	19.5	13	17
VPHE 10L□6J	6	10	8	32	14	11.5	19.5	13	17
VPHE 15L□6J	6	15	8	32	14	11.5	19.5	13	17
VPHE 20L□6J	6	20	10	35	15	11.5	19.5	15	19
VPHE 30L□6J	6	30	10	35	15	11.5	19.5	15	20
VPHE 40L□6J	6	40	10	35	15	11.5	19.5	15	25



1

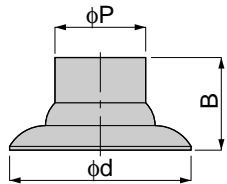


2



## VP SOFT TYPE

Soft type  
pad rubber alone



unit:mm

Model	Pad dia. φd	B	φP	Mass (g)
VP 4L□	4	12	12	1
VP 6L□	6	12	12	1
VP 8L□	8	12	12	1
VP 10L□	10	14	12	1
VP 15L□	15	14	12	1
VP 20L□	20	15	12	2
VP 30L□	30	15	15	4
VP 40L□	40	15	20	8



1