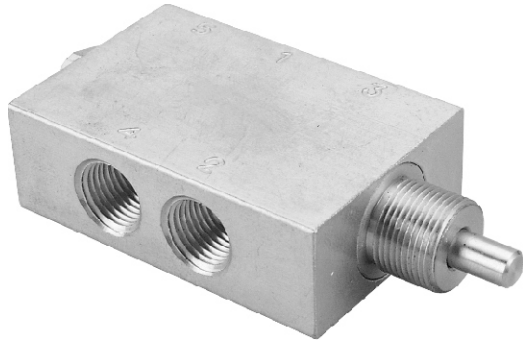


# MVHF-5P

## MECHANICAL VALVES



### Specification:

Type	4-way spool valve plunger actuated spring return fully ported
Medium	Air, water, oil
Stem travel	1/8"
Input pressure	Vacum to 150 psig max.
Effective orifice	8.6 mm <sup>2</sup>
Force for full stem travel	4 1/2 lb nominal
Temperature range	32°F ~230°F
Ports	Input: 1/8" BSP Output: 1/8" BSP Exhaust: 1/8" BSP
Mounting	15/32-32 male thread nuts and lock washers furnished
Weight	171 g

※ Port thread NPT. are also available.

