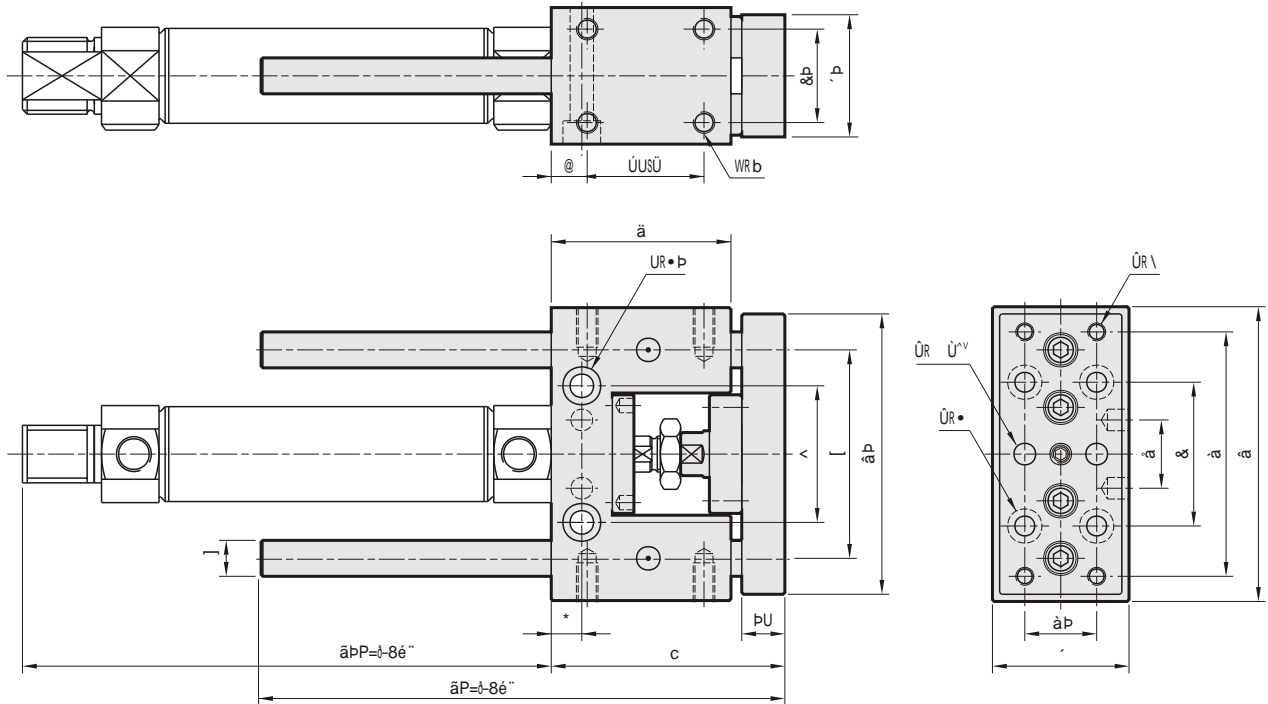


**^ X e ** (Oilless bush guide)

'8-'' UTQ UÜ



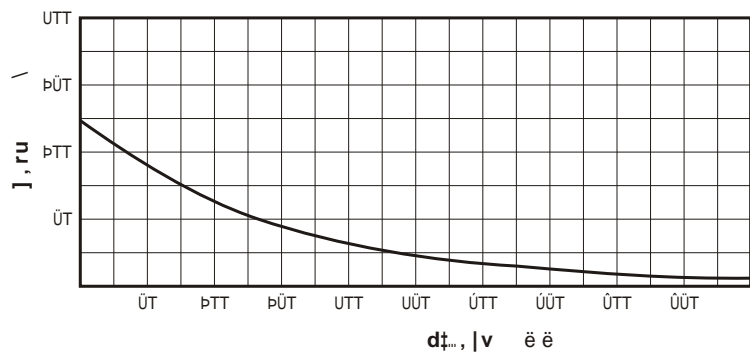
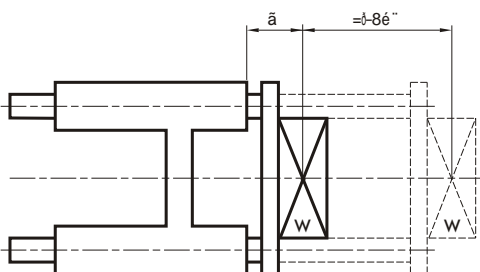
Uz ~ v€tz, €r}t}rs}v

ä8'' -t}l-3æ3	R	RB	S	SB	T	V	VB	W	WB	X	Y	[\] B	^	_	c	d	g	gB	h			
UT	WU	VW	ÚW	ÚÚ	ÚT	ÚW	UT	ÚT	UÚ	ÞX	ÚW	wsÜ	Ü	WÜ	WW	b Ü0æ0ÞÞ	b Ü	ÚW	ÞT	ÚSÚ	XsÚ0æ0ÚSÚ	ÚSÚ	ÞTSÚ0æ0ÚSÚ	ÚÚ
UÜ	WU	VW	ÚW	ÚÚ	ÚT	ÚW	UT	ÚT	UÚ	ÞX	ÚW	wsÜ	Ü	WÜ	WX	b Ü0æ0ÞÞ	b Ü	ÚW	ÞT	ÚSÚ	XsÚ0æ0ÚSÚ	ÚSÚ	ÞTSÚ0æ0ÚSÚ	ÚÚ

^ r (z ~ ^ ~ 1r}}, Šrs}vlt, ..., ^ vl ~ , ~ v€t

Max. allowable load

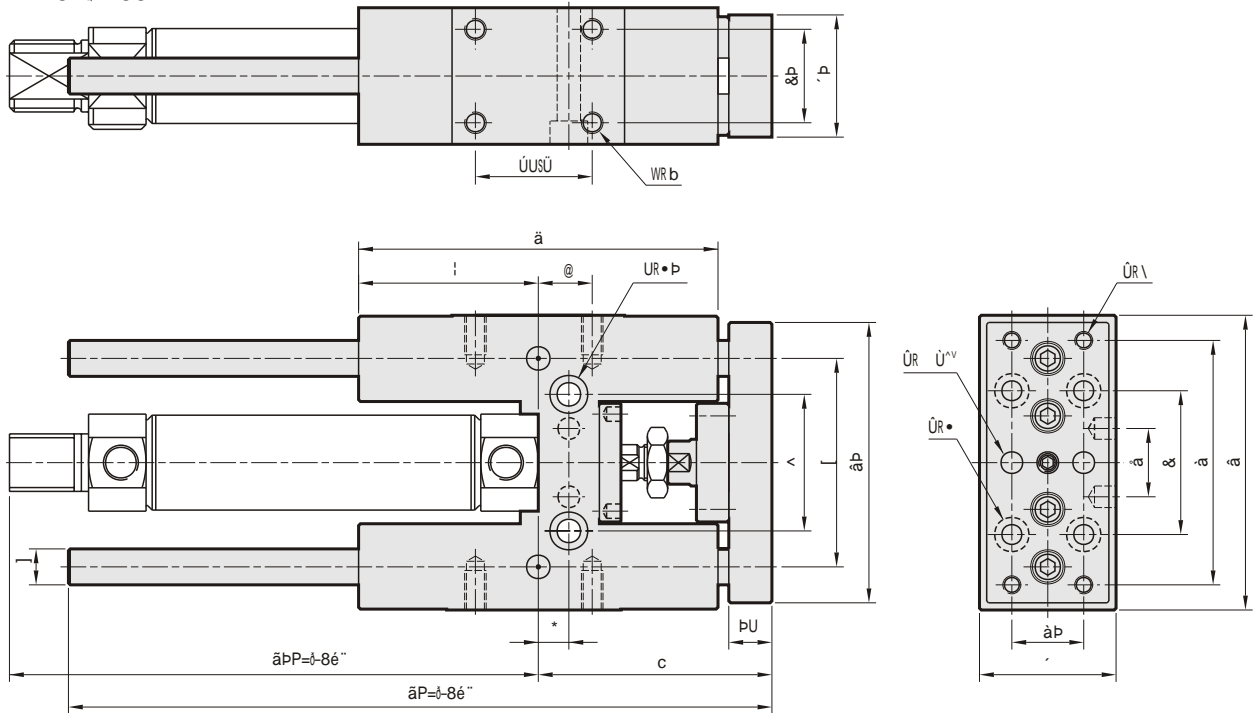
^ X e \ '8-'' UTQ UÜ



^ X eS (Brass bush guide)

^ X ef (Linear bearing guide)

'8-'' UTQ UÜ



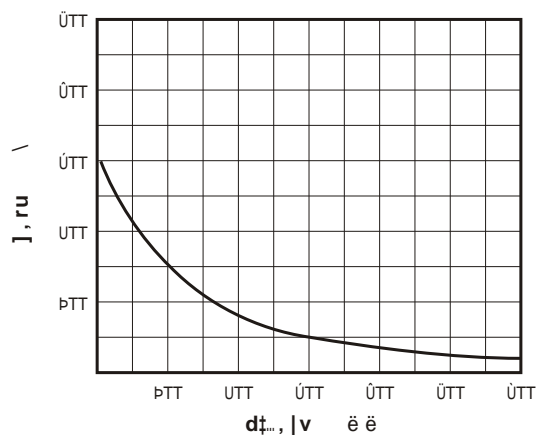
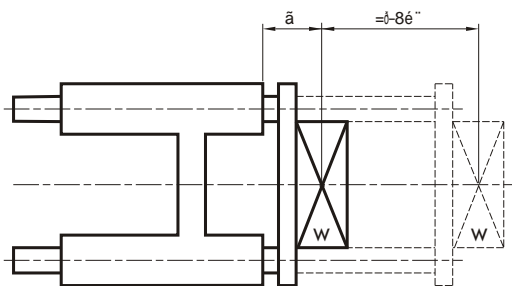
Uz ~ v€tz, €r}ttrs}v

$\frac{a}{8} \pm 0.06$	R	RB	S	SB	T	V	VB	W	WB	X	Y	[\]]B	^	_	c	d	f	g	gB	h		
UT	WU	VW	ÚW	ÚÜ	PTT	ÚW	UT	ÚT	UÜ	UX	ÚW	WSÜ	PU	PUÜ	WW	bÜÜÜÜÜÜÜ	bÜ	ÚW	PT	ÚT	ÚSÜÜ	XSÜÜÜÜÜÜ	ÚSÜÜ	PTÜÜÜÜÜÜ	ÚÜ
UÜ	WU	VW	ÚW	ÚÜ	PTT	ÚW	UT	ÚT	UÜ	UX	ÚW	WSÜ	PU	PUÜ	WX	bÜÜÜÜÜÜÜ	bÜ	ÚW	PT	ÚT	ÚSÜÜ	XSÜÜÜÜÜÜ	ÚSÜÜ	PTÜÜÜÜÜÜ	ÚÜ

^ r (z ~ ^ ~ 1r)}, Šrs}vlt, ..., ^ vl ~ , ~ v€t

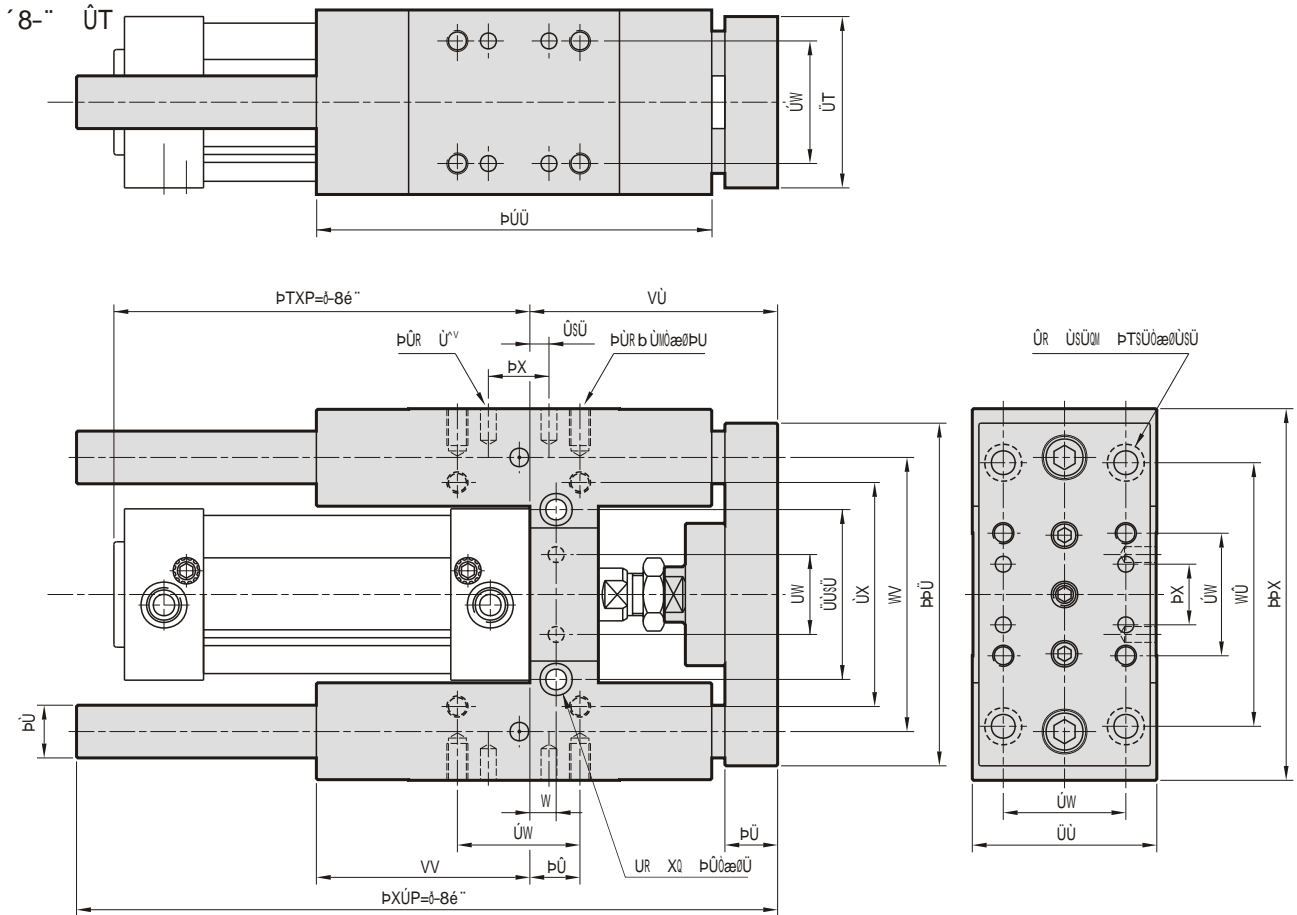
Max. allowable load

^ X eS? ^ X ef '8-'' UTQ UÜ



^ X eS (Brass bush guide)

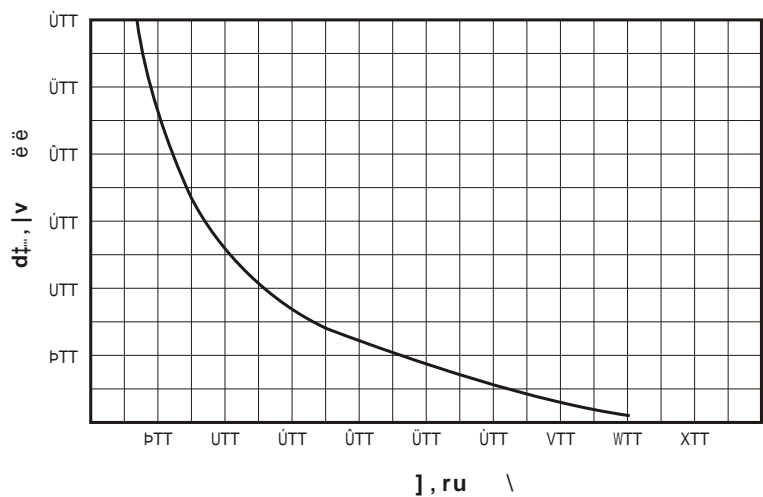
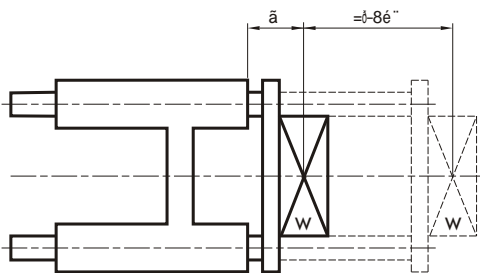
^ X ef (Linear bearing guide)



^ r (z ~ ^ ~ 1r)}, Šrs}v\\$, ..., ^ v\\$, ~ v€\\$

Max. allowable load

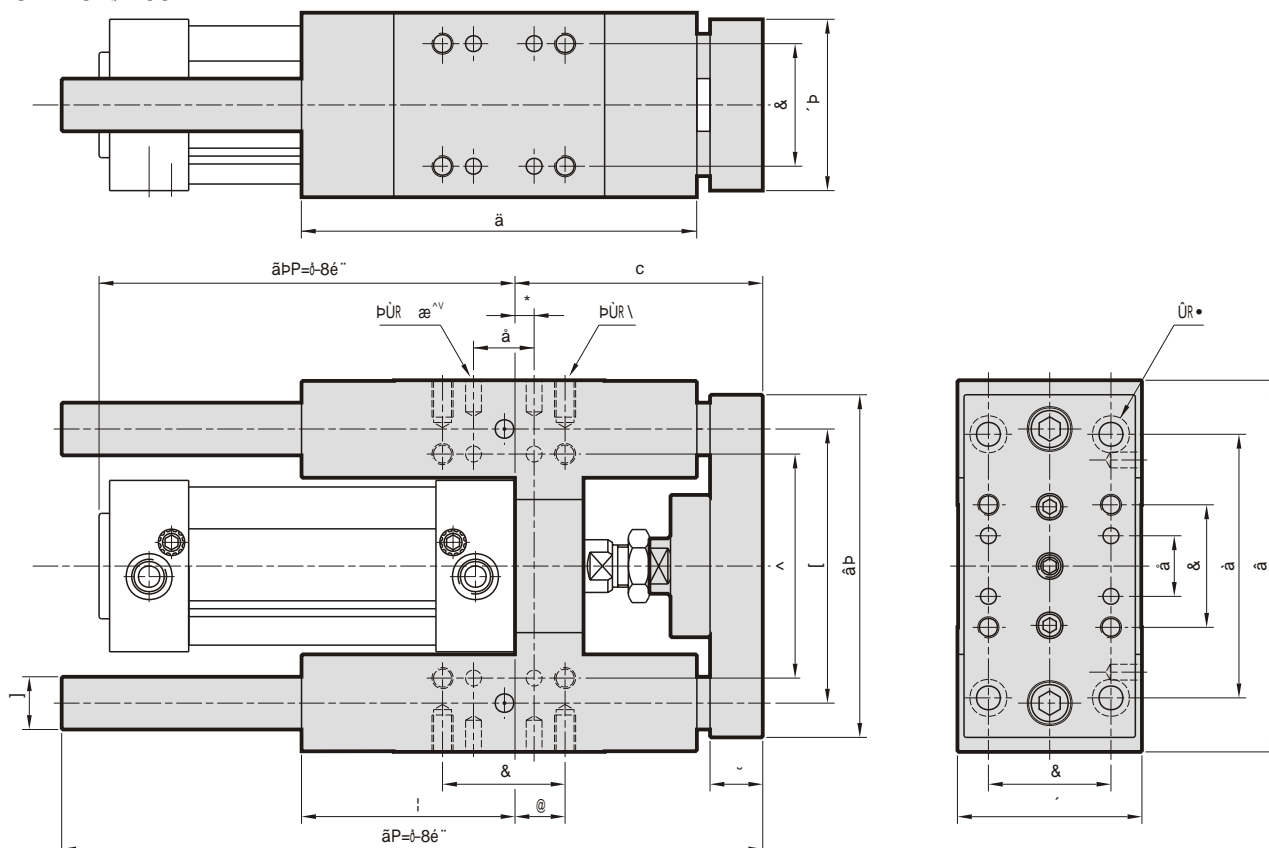
^ X eS? ^ X ef '8'' ŪT



^ X eS (Brass bush guide)

^ X ef (Linear bearing guide)

'8-'' ÜTQ ÛÚ

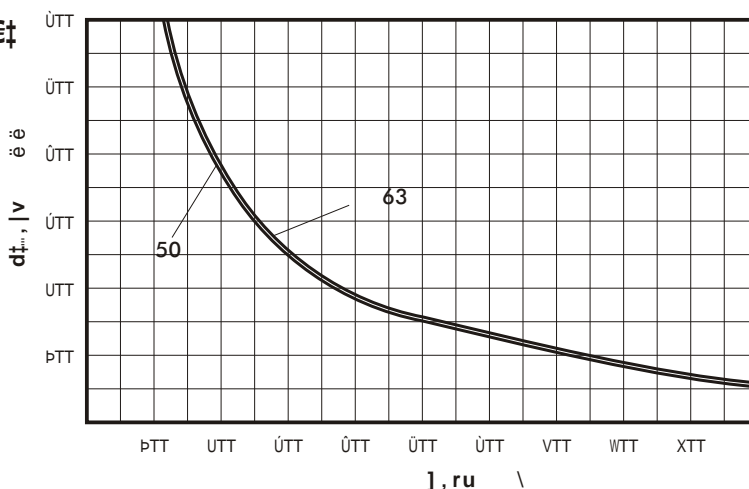
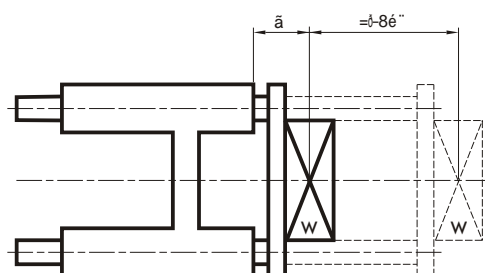


Uz ~ v€tz, €r}ttrsv

ã8° -1+''-l3æø	R	RB	S	SB	T	U	V	W	X	Y	[\]B	_	c	d	e	f	g	h		
ÜT	ÞÜÞ	ÞÜÜ	VT	ÜÜ	ÞÜT	Ü	ÞTT	ÜÜSÜ	UÜ	WÜ	VSÜ	ÞX	UPÜ	ÞÞT	bWQæøÞÜ	ÞTÜ	UT	UT	WP	XÜ	ÞÜCæøWSÜ	XÜ
ÜÜ	ÞÜÜ	ÞÜT	WT	VÜ	ÞÜT	Ü	ÞTÜ	ÜÜSÜ	UW	ÞTT	Ü	ÞX	UÜT	ÞÜÜ	bWQæøÞÜ	ÞÞX	UT	UT	XÜ	XÜ	ÞÜCæøWSÜ	XÜ

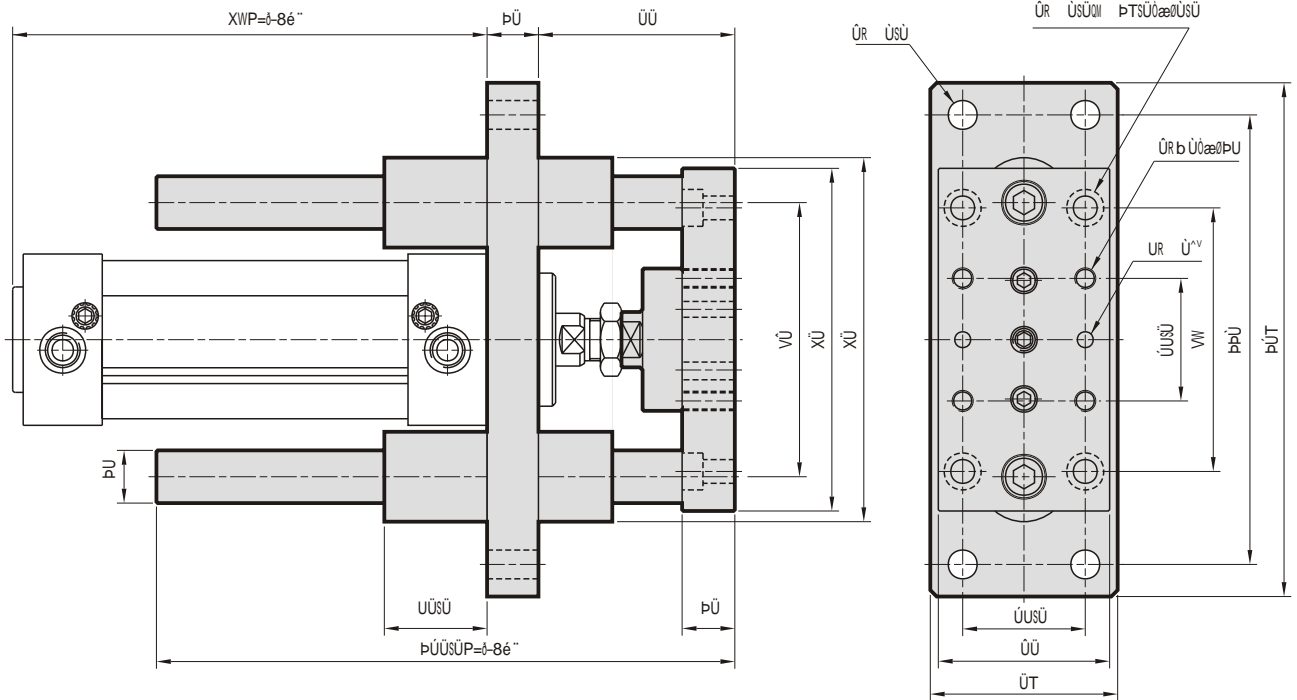
^ r (z ~ ^ ~ 1r)}, Šrs}vlt, ..., ^ vl ~ , ~ v€t
Max. allowable load

^ X eS? ^ X ef '8-'' ÜTQ ÛÚ



^ X ei (Flange type)

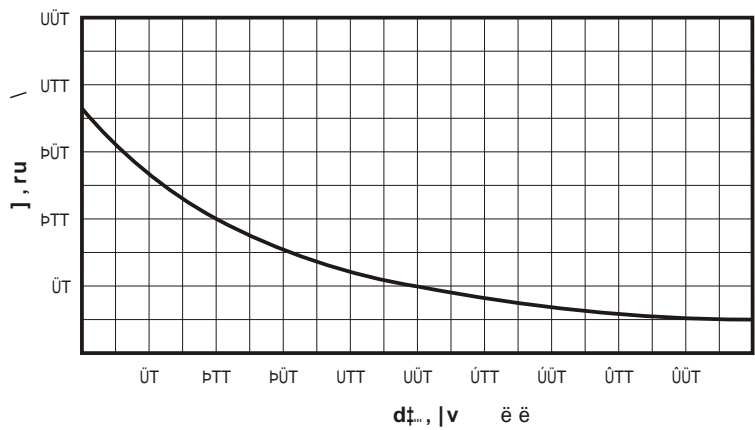
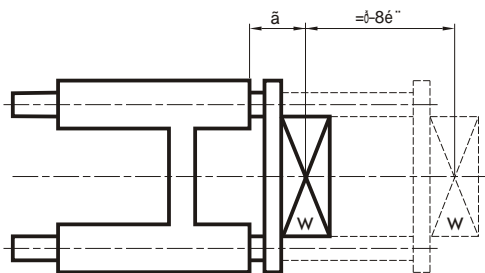
'8-'' úú



$\wedge r(z \sim \wedge \sim 1r\}} , \check{S}rs\}v\ddot{t}\ddot{,} \dots, \wedge v\ddot{1} \sim , \sim v\epsilon\ddot{t}$

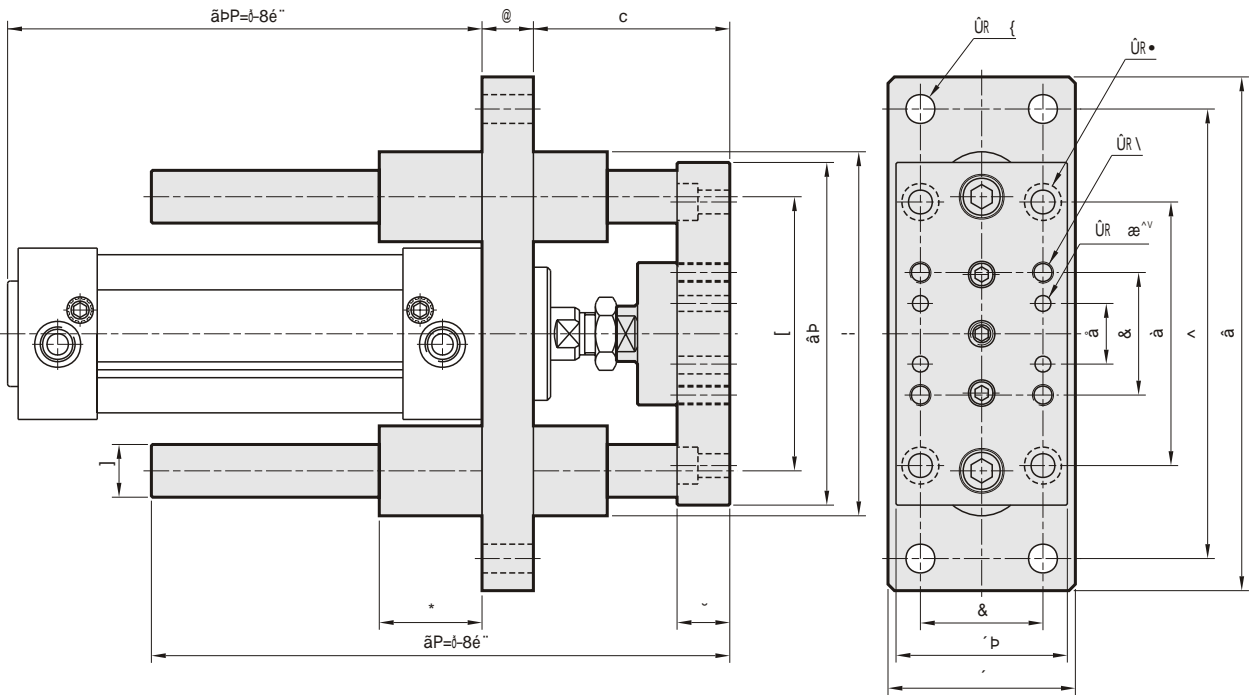
Max. allowable load

^ X ei '8-'' úú



^ X ei (Flange type)

'8-'' ÛTQ ÛTQ ÛÚ



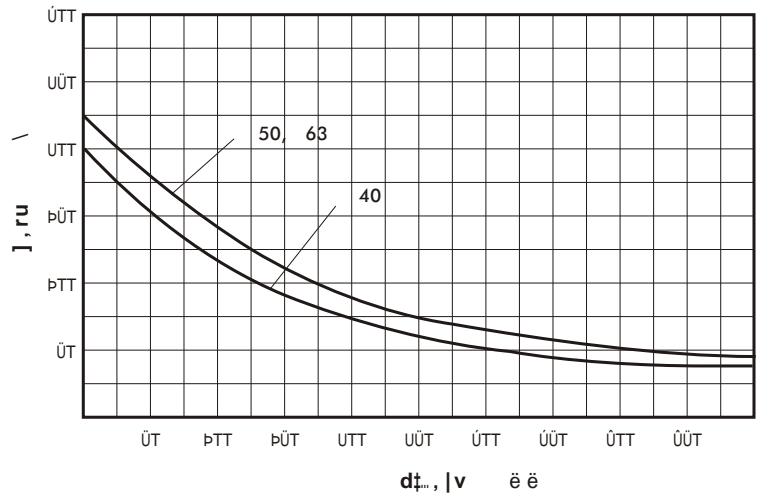
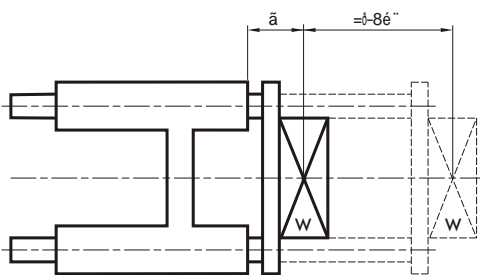
Uz ~ v€tz, €r}ttrs}v

$\bar{a}8é''$ $\bar{b}8é''$	R	RB	S	SB	U	V	W	X	Y	[\] B	-	a	c	d	e	f	g	h	
ÛT	ßÛT	ßßÛ	ÛÛ	ÛÛ	Û	WÛ	ÛW	ßX	ßÛT	ÛÛ	ßÛ	ßÛW	ßÛX	X	WV	ßÛ	ßÛ	ßßÛ	ÛSÛW	ßTSÛÛÛÛÛ	Ûß
ÛT	ßWT	ßÛÛ	VT	ÛÛ	Û	ßTT	ÛÛSÛ	ÛÛ	ßÛT	ÛÛ	UT	ßVT	ßßT	X	ßTÛ	UT	UT	ßÛÛ	XW	ßÛÛÛÛSÛ	VÛ
ÛÛ	ßXÛ	ßÛT	WT	VÛ	Û	ßTÛ	ÛÛSÛ	UW	ßVÛ	ÛÛ	UT	ßVT	ßÛÛ	X	ßßX	UT	UT	ßÛß	XW	ßÛÛÛÛSÛ	VÛ

^ r (z ~ ^ ~ 1r)}, Šrs}vlt, ..., ^v| ~ , ~ v€t

Max. allowable load

^ X ei '8-'' ÛT• ÛÚ



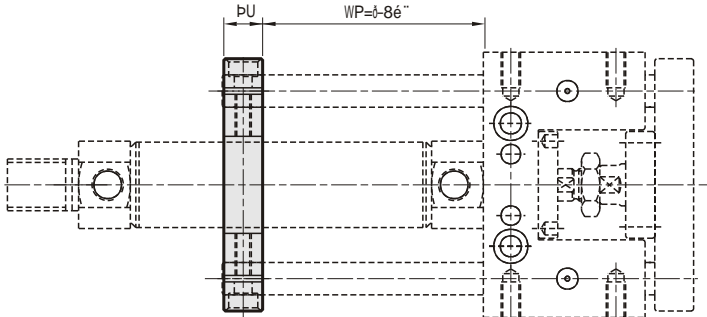
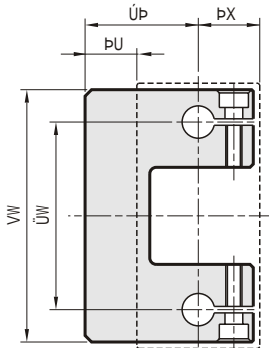
l f s I? UTQ UÜM c v r ... 1 w } r € x v l t , ^ f } z € x

eh Z_ > X f Z J V T j] Z_ U V c d



^ X e \

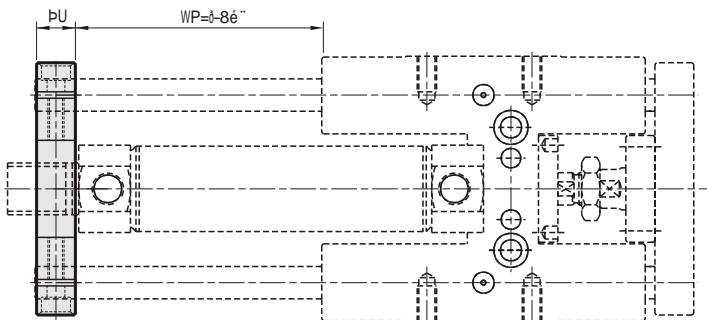
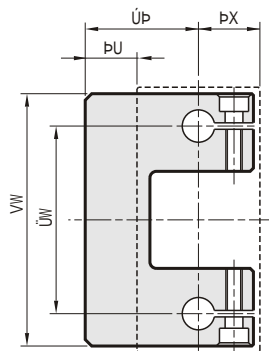
'8-'' UTQ UÜ



^ X e S

^ X e f

'8-'' UTQ UÜ

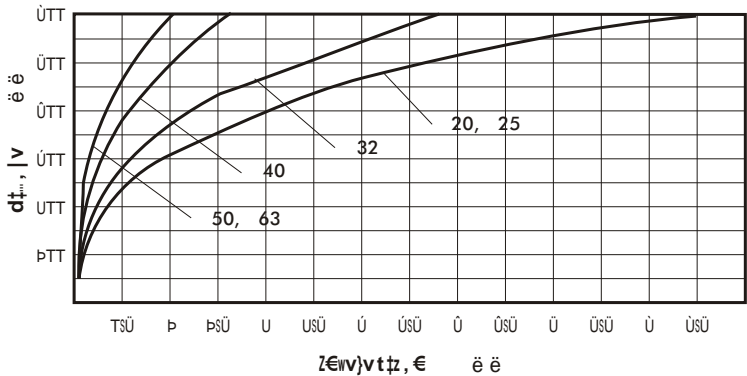
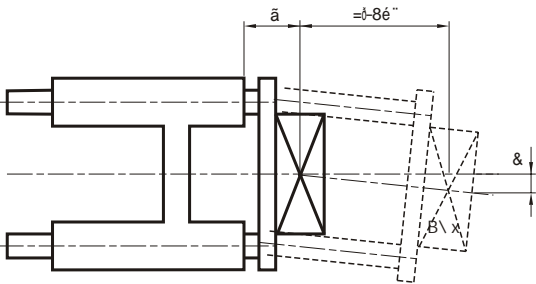


^ r (z ~ ^ ~ 1 r } , Š r s } v l t , ... , ^ v l ~ , ~ v € t

Max. allowable load

^ X e S ? ^ X e f

-é:~ †i8é\8-!\$!i° "ll=d" é=ll=° ! "l8l0" "l-l f " \$ "0l=! è è ""
88l0 " "l8d° l8:lB@S\$- "éd" ° l08l0 " "l=1-8é" S



' ! iè° iè\$ll è d0'' -dè\l dè ! è iè ! è ll d#85
Ull ä i d è ... =ll=†-'' f =ll d-'' ll è †! ° " ° ll è l0 " "ll= ! è 5

h v z x y † l , w l † y v l x ^ z u v l t (€) z € u v ...

! è 0 ll è S

S, ...v	Sr † z t l Š v z x y †	d_t, v CF1 ~ ~	Sr † z t l Š v z x y †	d_t, v CF1 ~ ~	Sr † z t l Š v z x y †	d_t, v CF1 ~ ~
UT	TSÚXT	TSTÚT	†STXT	TSTÚT	TSXÚV	TSTÚT
UÜ	TSV†Ü	TSTÜW	†SV†ÜV	TSTÜW	†ST†Ü	TSTÜW

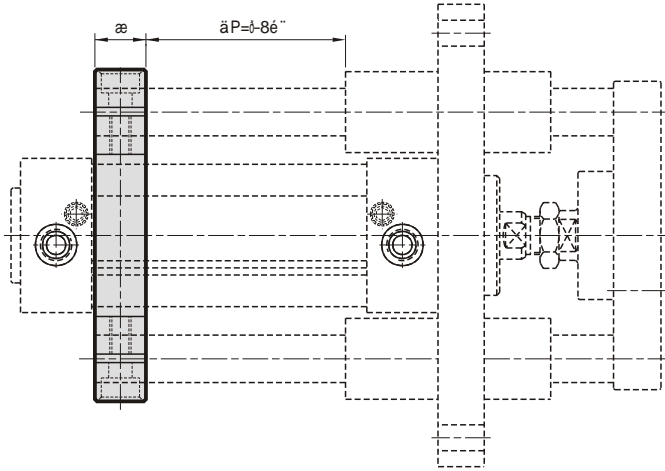
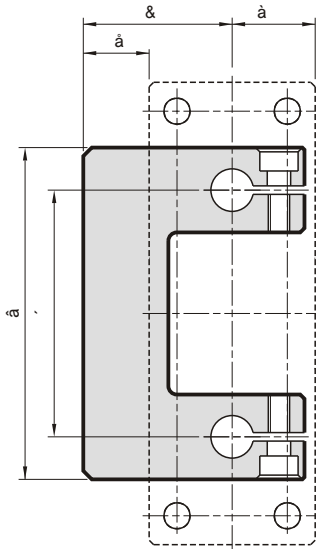
l f s I? ÚÚÚ ÚTQ ÚTQ ÚÚM cvr...1w}r€xvlt, ^f}z€x

eh Z_>X f ZJV Tj] Z_ UVcd



^ X ei

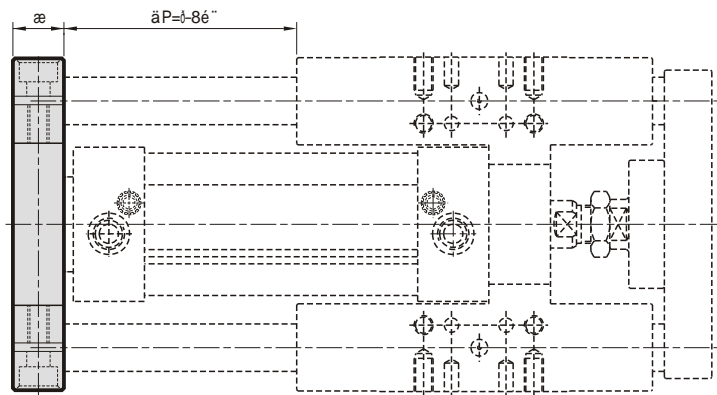
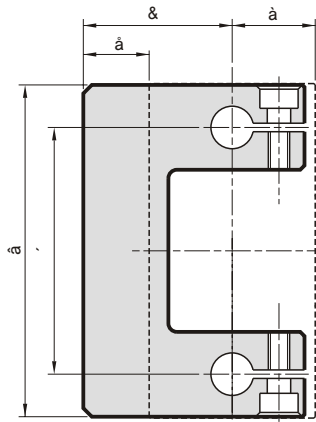
'8- ÚÚÚ ÚTQ ÚTQ ÚÚ



^ X eS

^ X ef

'8- ÚÚÚ ÚTQ ÚTQ ÚÚ



Uz ~ v€tz, €r}t}rs}v

ã8° -1+~13æø	R	S	T	U	V	W	X
ÚÚ	xÜ	vÜ	uÜ	pÜ	uÜ	úV	uu
ÚT	þþÜ	wv	ut	ut	uw	úusÜ	úúsÜ
ÚT	púÜ	þTÜ	ut	ut	úÜ	úvsÜ	úusÜ
ÚÚ	þÜT	þþX	ut	ut	úT	vw	úw

! iè° rè\$ll è dè° -rdèllè! è rè! è llèdè85
Ull ä ä è ...=ll=þ° f=ld-°llèþè! °° °llèlè° °ll=!è5

h vzxyt! , w!tyvix ^zuvlt(€)z€uv...

! èdèllèS

S, ...v	Sr}zt1švzxyt	d}., v CF1 ~ ~	Sr}zt1švzxyt	d}., v CF1 ~ ~	Sr}zt1švzxyt	d}., v CF1 ~ ~
	ã ~ °10° -d=ll=ll=°ll°°	ã ~ °10° -d=ll=ll=°ll°°	ã ~ °10° -d=ll=ll=°ll°°	ã ~ °10° -d=ll=ll=°ll°°	ã ~ °10° -d=ll=ll=°ll°°	ã ~ °10° -d=ll=ll=°ll°°
ÚÚ	USTÚT	TSpTT	þSpþW	TSpTT	þSUVÜ	TSpTT
ÚT	úSúUú	TSpÜX	úSþþÜ	TSpÜX	USTWU	TSpÜX
ÚT	úSúWú	TSpÚT	úSþúU	TSpÚT	úSúÚT	TSpÚT
ÚÚ	úSþþÜ	TSpÚT	úSúXT	TSpÚT	úSúþ	TSpÚT