

### Features:

- Compact design for low weight and high reliability of long life.
- Suitable for high moments and high gripping-forces.
- The housing: high-tensile aluminium and special hard-coated.

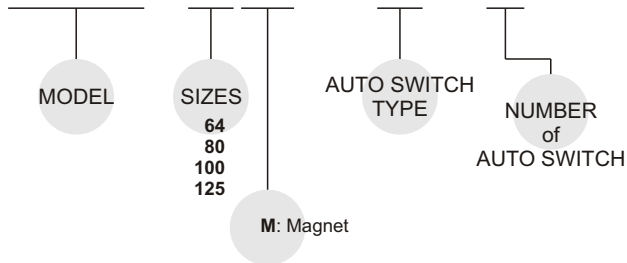
### Specification:

Model	MCHQ-64	MCHQ-80	MCHQ-100	MCHQ-125
Acting type	Double acting			
Bore	25	32	40	50
Stroke	12	16	20	26
Fluid	Air 3~7 kgf/cm <sup>2</sup>			
Ambient temperature	-5~+60°C (No freezing)			
Lubrication	Not required			
Weight(kg)	0.28	0.45	0.76	1.4

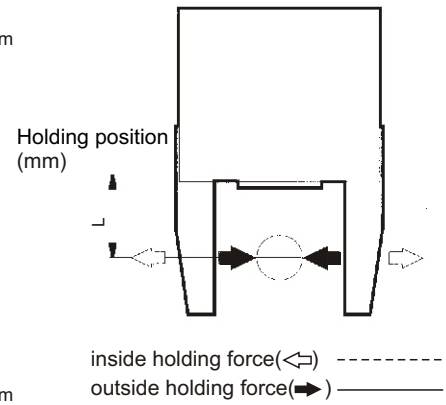
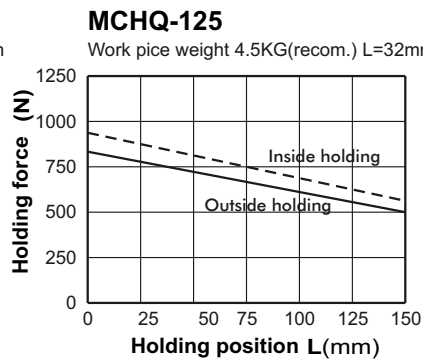
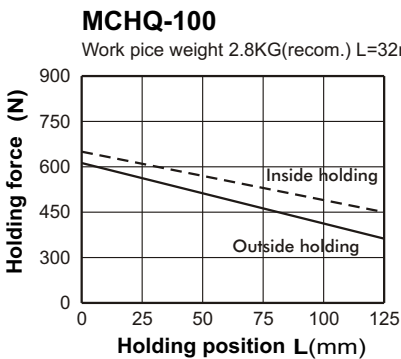
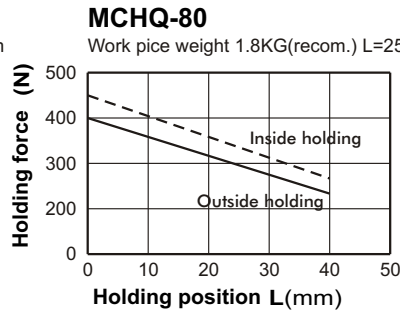
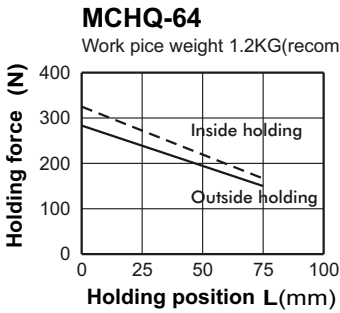
● Maintenance: Re-Lubrication after appr. 1.5 million cycles

### Order example:

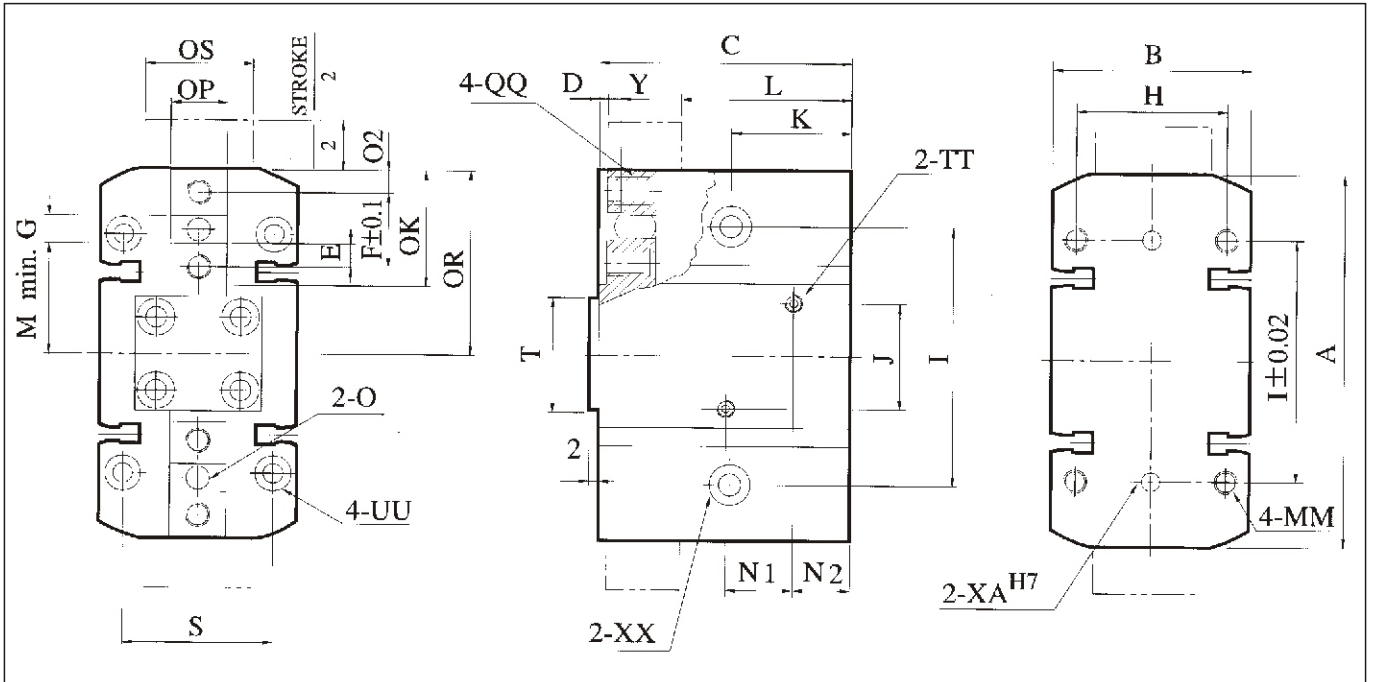
**MCHQ-64(M) - RH × 1**



Gripping force in relation to the holding position "L" at 6kgf/cm<sup>2</sup>



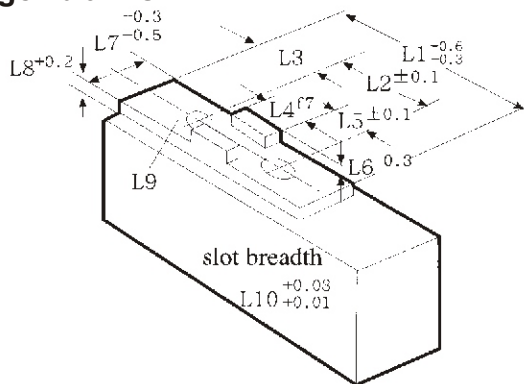
- With reference to the holding force, under the condition must be considered.
- Condition: friction coefficient, great acceleration impact is expected during work piece rotate.
- It recommend: select a type of arithmetic holding force that can produce 10 to 20 times for work piece weight.



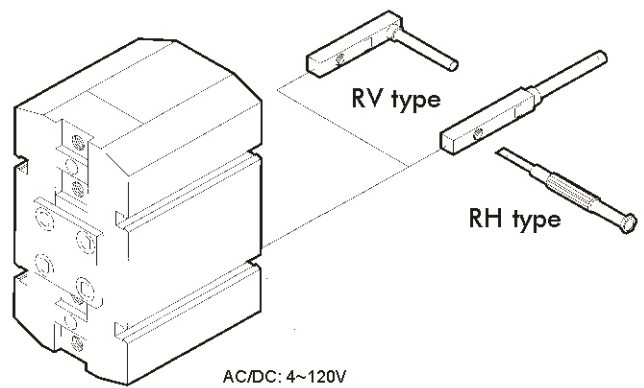
Code Model	A	B	C	D	E	F	G	H	I	J	K	L	M	MM	N1	N2	O	O2	OK	OP	OS	QQ	T	TT
MCHQ-64	64	36	42	2	4	13	5	27	42	16	22	27	19	M5×0.8	16.5	7	φ4	4	20	10.2	18.2	M4×0.7×8dp	20	M5×0.8
MCHQ-80	80	42	51	2	5	16	6	32	52	21	23	34	24	M5×0.8	19.5	8	φ5	5	25	12.2	23.2	M5×0.8×9dp	25	M5×0.8
MCHQ-100	100	50	59	3	6	20	8	38	66	46	20	40	30	M6×1.0	21.5	9.5	φ6	6	32	14.2	27.2	M6×1.0×12dp	25	PT 1/8
MCHQ-125	125	60	68	5	8	24	8	45	82	55	36	44	38	M8×1.25	22	10.5	φ6	8.5	40	16.2	30.2	M6×1.0×12dp	36	PT 1/8

Code Model	UU	XA	XX	Y
MCHQ-64	φ 4.2thru, φ 7.6C/B×10dp	φ 4	φ 4.5thru, φ 8C/B×8 dp	2.5
MCHQ-80	φ 4.2thru, φ 7.6C/B×14dp	φ 4	φ 5.1thru, φ 9C/B×10 dp	3
MCHQ-100	φ 5.2thru, φ 9.1C/B×14dp	φ 5	φ 6.6thru, φ 11C/B×12 dp	3
MCHQ-125	φ 6.8thru, φ 11C/B×16dp	φ 6	φ 9thru, φ 15C/B×14 dp	3.5

### Finger blanks



### Auto switch setting position



Code Model	L1	L2	L3	L4	L5	L6	L7	L8	L9	L10
MCHQ-64	20	13	4	5	4	2.5	10.2	4.5	φ4.5	4
MCHQ-80	25	16	5	6	5	3	12.2	5.5	φ5.5	5
MCHQ-100	32	20	6	8	6	3	14.2	5.5	φ6.6	6
MCHQ-125	40	24	8.5	8	8	3.5	16.2	5.5	φ6.6	6