

MCHA series $\phi 12\sim\phi 32$

GRIPPERS



Order example:

MCHA — 20

MODEL

TUBE I.D.

Features:

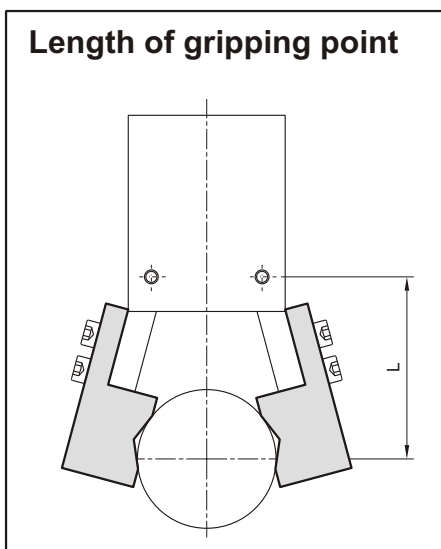
- Available with a comprehensive selection of bore size ($\phi 12\sim\phi 32$) for the various needs.
- The highly accurate, air-driven open closed work.

Specification:

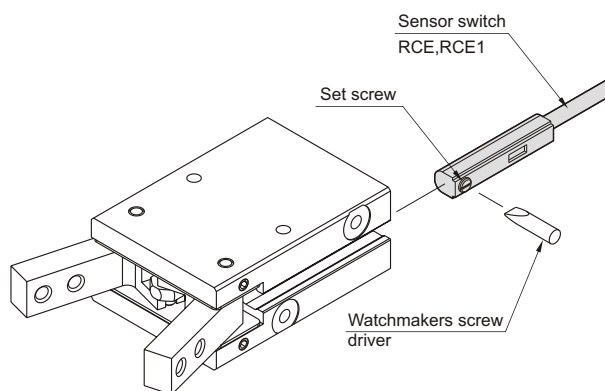
Model	MCHA					
Acting Type	Double Acting					
Tube I.D. (mm)	12	16	20	25	32	
Port size Rc(PT)	M3×0.5	M5×0.8				
Medium	Air					
Operating pressure range	1.5~7 kgf/cm ² (0.15~0.7 MPa)					
Ambient temperature	-5~+60°C (No freezing)					
Max frequency	180 Cycles/min					
Lubrication	Cylinder	Not required				
	Lever	Grease				
Max arm length (L) ※	30	40	60	70	85	
Clamp / Release angle	-10~30°					
Theorem moment (M) ※	Closed	0.4×P	0.9×P	1.7×P	3.4×P	6.1×P
	Open	0.5×P	1.2×P	2.3×P	4.4×P	8.1×P
Clamping force (F) ※	$F = M / L \times 0.85$					
Sensor switch	RCE, RCE1					
Weight (g)	53	103	193	327	525	

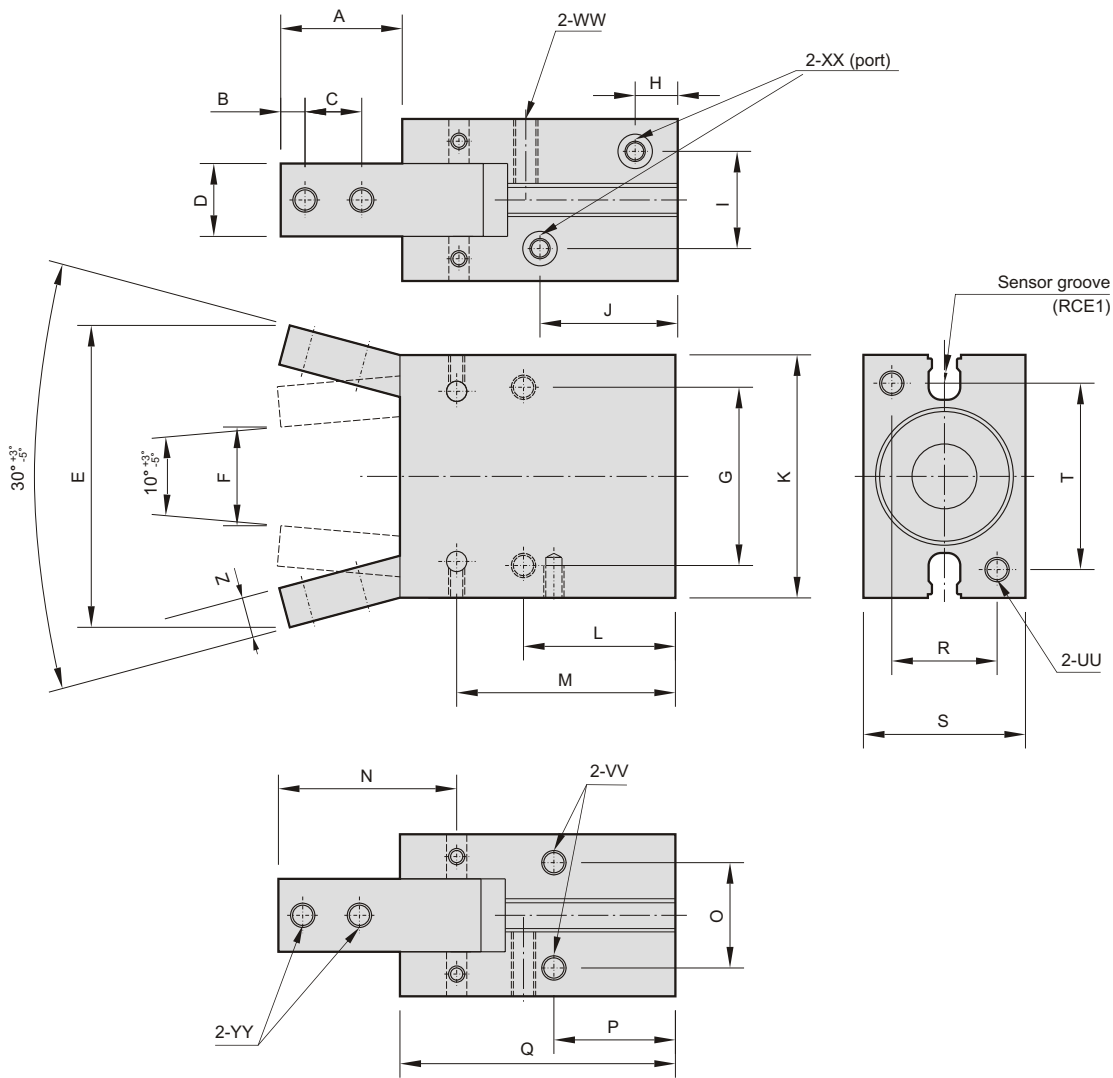
※ L : Arm length (mm), M : Theorem moment (kgf-cm),
F : Clamping force (kgf), P : Operating pressure (kgf/cm²).

Length of gripping point



Installation of sensor switch





Code Tube I.D.	A	B	C	D	E	F	G	H	I	J	K	L	M	N	O	P	Q	R	S	T	UU	VV	WW	XX	YY	Z
12	15.4	3	6	7	33	9	20	7.45	10.2	23.5	28	20	32.9	21.5	10.2	16	39	10	16	22	M3	M3	M3	M3	M3	5
16	17.5	3	8	9	43	14	24	7.5	12	22	34	22.5	35	25	14	18	42.5	14	22	26	M4	M4	M4	M5	M3	6
20	22	4	10	12	54	18	30	8	13	25	45	25	39.5	32.5	16	19	50	16	26	35	M5	M5	M5	M5	M4	7
25	26	5	12	14	64	21	36	8.5	18	28	52	28.5	45.5	38.5	20	21.5	58	20	32	40	M6	M6	M6	M5	M5	9
32	30	6	14	18	74	24	44	10.5	24	34	60	37.5	54	44	26	30	68	26	40	46	M6	M6	M6	M5	M6	10