

(Production upon order)

Fixed Orifice Type Joint

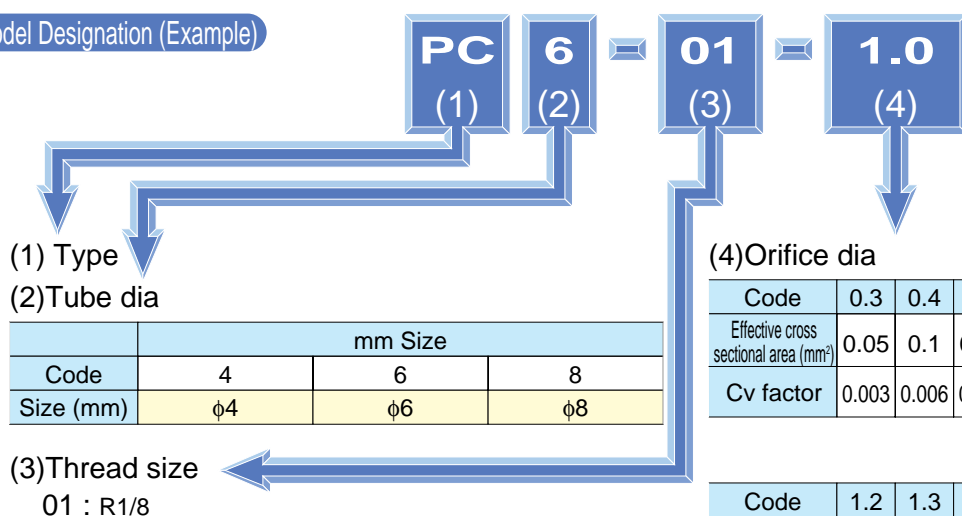
Features

- The fixed orifice controls air flow.
- Compared with needle valves, this low-cost joint can be installed in a small space.
- The fixed orifice comes with 18 effective cross sectional area.

Specification

Fluid admitted	Air	
Service pressure range	0~150psi	0 ~ 0.9MPa(0 ~ 9kgf/cm ²)
Working vacuum	-29.5in. Hg	-750mmHg(10Torr)
Service temperature range	32~140°F	0 ~ 60°C

Model Designation (Example)



	mm Size		
Code	4	6	8
Size (mm)	φ4	φ6	φ8

Code	0.3	0.4	0.5	0.6	0.7	0.8	0.9	1.0	1.1
Effective cross sectional area (mm ²)	0.05	0.1	0.15	0.2	0.25	0.35	0.4	0.5	0.7
Cv factor	0.003	0.006	0.008	0.011	0.014	0.020	0.023	0.028	0.040

Code	1.2	1.3	1.4	1.5	1.6	1.7	1.8	1.9	2.0
Effective cross sectional area (mm ²)	0.85	1.0	1.15	1.45	1.65	1.85	2.1	2.3	2.5
Cv factor	0.048	0.057	0.065	0.082	0.093	0.105	0.119	0.130	0.141

⚠ Detailed safety Instruction

Before using the PISCO device, be sure to read the "Safety Instructions", "Common Safety Instructions for Products Listed in This Manual" on pages 23~24 and "Common Safety Instructions for Controllers" on pages 167~168.

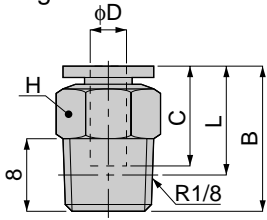
⚠ Caution

1. Before use, be sure to confirm the orifice inside diameter marked on the hexagon part. A wrong orifice inside diameter may change the flow rate.
2. To achieve accurate flow control, select an optimal orifice inside diameter by actual measurements.

Control Series Fixed Orifice Type Joint

unit:mm

PC FIXED ORIFICE Straight



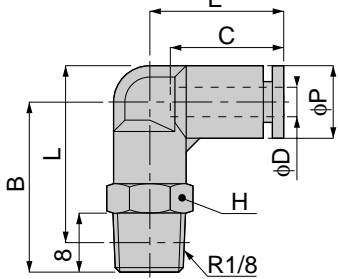
Model	Tube dia. φD	B	L	C	H	Mass (g)
PC 4-01 □	4	21	17	15	10	8.5
PC 6-01 □	6	22.5	18.5	17	12	9
PC 8-01 □	8	28	24	18.5	14	15

Code	0.3	0.4	0.5	0.6	0.7	0.8	0.9	1.0	1.1
Eff. a. (mm ²)	0.05	0.1	0.15	0.2	0.25	0.35	0.4	0.5	0.7

Code	1.2	1.3	1.4	1.5	1.6	1.7	1.8	1.9	2
Eff. a. (mm ²)	0.85	1.0	1.15	1.45	1.65	1.85	2.1	2.3	2.5

unit:mm

PL FIXED ORIFICE Elbow



Model	Tube dia. φD	B	L	φP	C	E	H	Mass (g)
PL 4-01 □	4	23.5	24.5	10	15	18.5	10	12
PL 6-01 □	6	25	27	12.5	17	20	12	14
PL 8-01 □	8	28	31	14.5	18.5	23	14	18

Code	0.3	0.4	0.5	0.6	0.7	0.8	0.9	1.0	1.1
Eff. a. (mm ²)	0.05	0.1	0.15	0.2	0.25	0.35	0.4	0.5	0.7

Code	1.2	1.3	1.4	1.5	1.6	1.7	1.8	1.9	2
Eff. a. (mm ²)	0.85	1.0	1.15	1.45	1.65	1.85	2.1	2.3	2.5