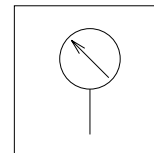


Pressure Gauge

Feature

- The compact-size pressure gauges can be installed in small spaces. With the built-in tube fitting type, tube connection is the only necessary step before pressure indication.

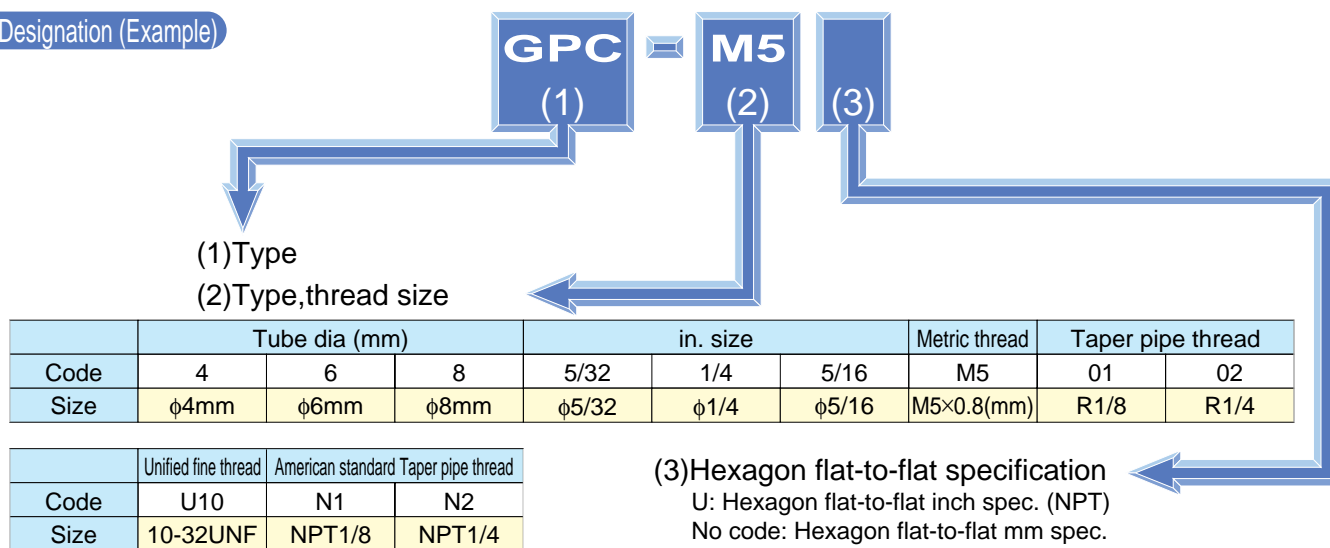
Graphical representation



Specification

Fluid admitted	Air	
Pressure indication range	0~113.8psi	0 ~ 0.8MPa
Accuracy	±5%(Full span)	
Service temperature range	32~140°F	0~60°C
Material	Cap	Acryl
	Metalic body	Nickel-plated brass
	Resin body	PBT(GPU, GPM)

Model Designation (Example)



⚠ Detailed Safety Instructions

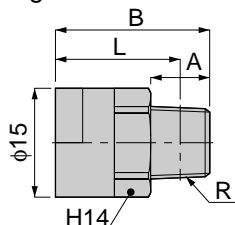
Before using the PISCO device, be sure to read the "Safety Instructions", "Common Safety Instructions for Products Listed in This Manual" on pages 23~24 and "Common Safety Instructions for Controllers" on pages 167~168.

⚠ Caution

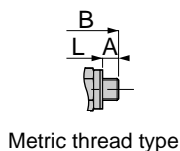
- The gauge orientation on the GPU and GPM types can not be changed by using a tool applied to the hexagon part. Direct turning of the gauge cap may damage the gauge or render the indication inaccurate.
- The gauge accuracy of Pressure Gauge is ±5%FS (full span). To confirm the accuracy, check with another gauge.

GPC Pressure gauge Straight

unit:mm



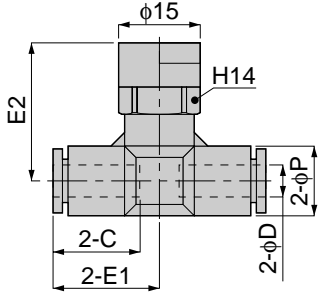
Model code	R	A	B	L	Mass (g)
GPC 15-M5	M5×0.8	3	16.5	13.5	6
GPC 15-01	R1/8	8	21	17	8
GPC 15-02	R1/4	11	24	18	16.5



Control Series Pressure Gauge

GPU

Union Straight

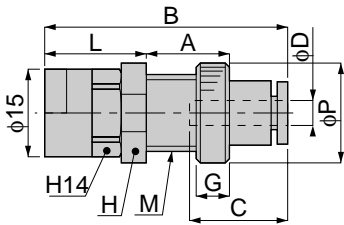


unit:mm

Model	Tube dia. φD	φP	C	E1	E2	Mass (g)
GPU 4-4	4	10	15	17	24.5	12.5
GPU 6-6	6	13	17	20	26	15.5
GPU 8-8	8	15	18.5	22	28	20

GPM

Bulkhead type

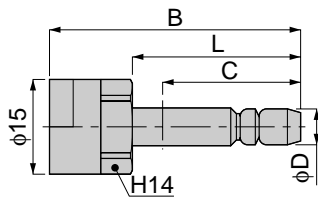


unit:mm

Model	Tube dia. φD	M	A	B	L	φP	C	G	H	Mass (g)
GPM 4	4	M12×1	16	39	17	16	15	5	14	12.5
GPM 6	6	M14×1	14	42.5	17	19	17	5	17	16
GPM 8	8	M16×1	17	45.5	18	22	18.5	6	19	21.5

GPJ

Nipple type



unit:mm

Model	φD	B	L	C	Mass (g)
GPJ 4	4	36	23	15	8
GPJ 6	6	38	25	17	9.5
GPJ 8	8	35	21	18.5	12.5