

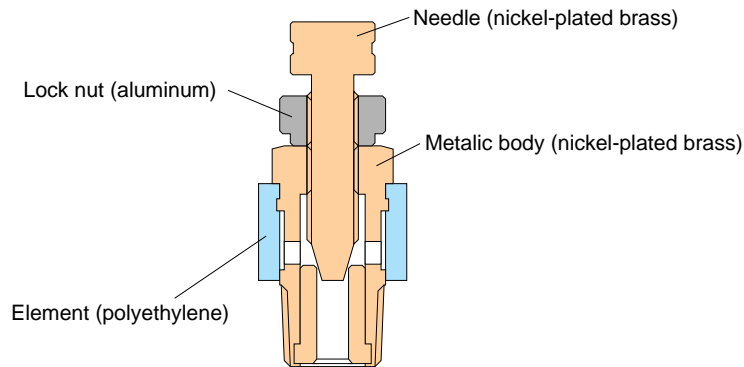
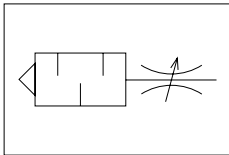
Exhaust Needle Valve Throttle Valve ET

Features

- This exhaust needle valve comes with silencer.
- The valve can be attached directly to solenoid valve where a cylinder or like mechanism has no sufficient space around for installation of a speed controller or adjustment of the needle.
- This valve is less expensive than the speed controller.

Construction

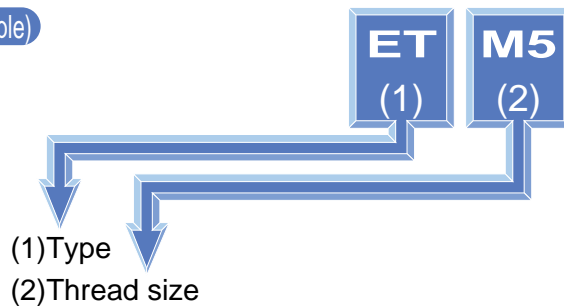
Graphical representation



Specification

Fluid admitted	Air	
Service pressure range	0~150psi	0 ~ 0.9MPa(0 ~ 9kgf/cm ²)
Service temperature range	32~140°F	0 ~ 60°C

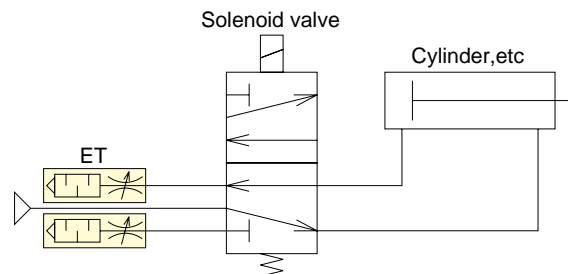
Model Designation (Example)



	Metric thread (mm)	Taper pipe thread			
Code	M5	01	02	03	04
Size	M5×0.8	R1/8	R1/4	R3/8	R1/2

	Unified fine thread	Taper pipe thread			
Code	U10	N1	N2	N3	N4
Size	10-32UNF	NPT1/8	NPT1/4	NPT3/8	NPT1/2

Application example



⚠ Detailed safety Instruction

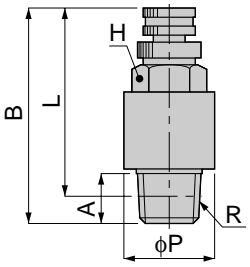
Before using the PISCO device, be sure to read the "Safety Instructions", "Common Safety Instructions for Products Listed in This Manual" on pages 23~24 and "Common Safety Instructions for Controllers" on pages 167~168.

⚠ Warning

1. Adjust the speed of the actuator by opening the needle gradually from the fully closed position. With the needle open, there are chances of the actuator flying out. Turn the needle clockwise to close or counterclockwise to open.
2. Clogging of the element raises resistance to exhaust, thus lowering the performance of the system as a whole.
3. Replace the valve body when the performance has dropped due to stopped up element. Replacement of the element alone is not permitted.



Exhaust Throttle Valve



Metric thread type



unit:mm

Model	R	A	B		L		φP	H	Mass (g)
			max	min	max	min			
ET M5	M5×0.8	3	25	22	22	19	10	8	4.5
ET 01	R1/8	8	35.5	29	31.5	25	14	10	15
ET 02	R1/4	11	39	32	33	26	18	14	29
ET 03	R3/8	12	42.5	35	36	28.5	22	17	55
ET 04	R1/2	15	42.5	36	34.5	28	27	21	83



1

unit:inch

Model	R	A	B		L		φP	H	Weight (oz)
			MAX	MIN	MAX	MIN			
ET U10U	10-32UNF	0.14	0.98	0.87	0.85	0.73	0.39	5/16	0.16
ET N1U	NPT 1/8	0.31	1.40	1.14	1.24	0.98	0.55	7/16	0.50
ET N2U	NPT 1/4	0.43	1.54	1.26	1.30	1.02	0.71	9/16	0.89
ET N3U	NPT 3/8	0.47	1.67	1.38	1.42	1.12	0.87	11/16	1.66
ET N4U	NPT 1/2	0.59	1.67	1.42	1.36	1.10	1.06	7/8	2.42

Flow characteristics

