

POWER UNITS - DWC & DWCE SERIES

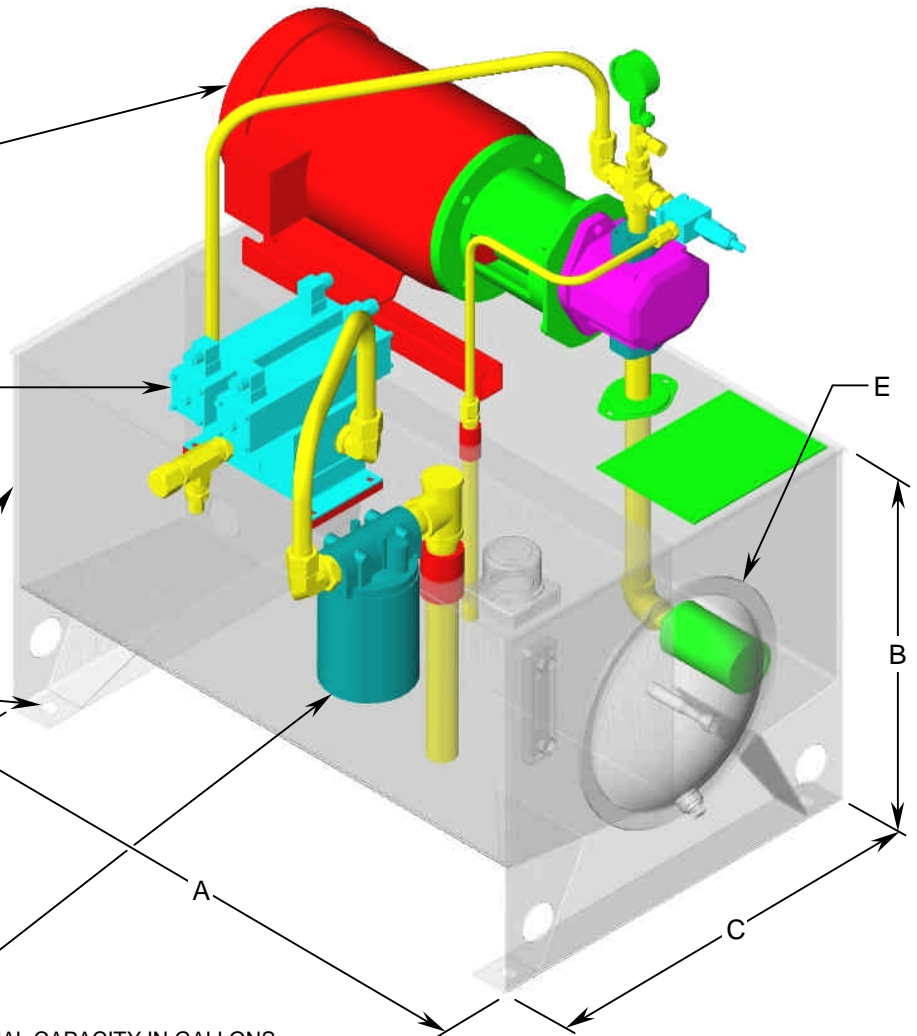
ELECTRIC MOTOR - 1 TO 100 HORSEPOWER. OPEN DRIP PROOF, TOTALLY ENCLOSED FAN COOLED, AND EXPLOSION PROOF ARE SOME OF THE CHOICES.

DYNEX OFFERS A WIDE RANGE OF DIRECTIONAL CONTROL VALVES, SIZES D03 TO D08H OR USE YOUR OWN. FROM A 1 STATION SUBPLATE TO MULTI-STATION MANIFOLDS. COMBINE THESE WITH STACK VALVES AND YOU CAN ACHIEVE LIMITLESS CIRCUIT SOLUTIONS.

RESERVOIR STYLE OFFERS A FOOT MOUNT HORIZONTAL TANK WITH END CLEAN OUT COVER(S), FULL BAFFLE, OIL SIGHT GAGE, AND FILLER/BREATHER. SIZES 10 TO 300 GALLON.

1" X 3/4" SLOTTED HOLE ON SIZES 10-100 GALLON. 3/4" DIA HOLE ON 120 GALLON AND UP.

SOME OF THE OPTIONS AVAILABLE INCLUDE RETURN FILTERS, RELIEF VALVES, SUCTION STRAINERS, TOP SERVICE COVERS, PRESSURE GAGES, EVEN EXTRA CONNECTIONS FOR EASIER INSTALLATION.



RESERVOIR STYLE NUMBER INDICATES NOMINAL CAPACITY IN GALLONS
WGT INDICATED IS RESERVOIR EMPTY ONLY. D=A+CLEANOUT. E=CLEANOUT DIA.

STYLE	DWC10	DWC15	DWC20	DWC30	DWC40	DWC50	DWC60	DWC80
A(L)	22	26	30	36	36	36	48	60
B(H)	20	20	20	20	22	23	21	21.25
C(W)	18	18	18	24	24	24	27	27
D	26	30	34	40.75	40.75	40.75	52.75	64.75
E	12	12	12	14	14	14	14	14
WGT. #	100	125	130	175	190	195	235	400

MODEL	DWC100	DWC120	DWC150	DWC200	DWC250	DWC300	DWC500
D/R #	8057009	8057010	8057011	8057012	8057013	8057014	8057015
GALS.	100	120	150	200	250	300	500
A(L)	60	60	60	72	72	72	72
B(H)	24.25	25.625	30.625	29.375	33	36.625	43
C(W)	27	30	30	36	36	36	48
D	64.75	66	66	78	78	78	78
E	14	18	18	18	18	18	18
WGT. #	425	540	595	940	1000	1075	1780

STANDARD FEATURES:

- CONFORMS TO J.I.C RECOMMENDATIONS
- END CLEANOUT COVER
- 'V' BOTTOM
- FULL BAFFLE
- OIL SIGHT GAGE WITH THERMOMETER
- MAGNETIC DRAIN PLUG
- FILLER/BREATHER
- STANDARD EXTERIOR PAINT
- DWCE RESERVOIR STYLE IS IDENTICAL TO DWC STYLE EXCEPT FOR DWCE 10-50 GALLON HAS 10 GA. ENDS AND TOP, AND ONLY ONE CLEANOUT COVER. DWCE 60-100 GALLON HAS 7 GA. ENDS, 10 GA TOP, AND TWO END CLEANOUT COVERS.



Issued: 05/02
DWC_HPU.doc

POWER UNITS - DWC & DWCE SERIES

ORDERING CODE

DWCE - 30 - 09J4203 - PVWH06 - O - V2 - S - PR - RBF

STYLE
DWC - JIC HORIZONTAL TANK
DWCE - ECONOMY HORIZONTAL TANK

SIZE
 10 - 10 GALLON CAPACITY
 15 - 15 GALLON CAPACITY
 20 - 20 GALLON CAPACITY
 30 - 30 GALLON CAPACITY
 40 - 40 GALLON CAPACITY
 50 - 50 GALLON CAPACITY
 60 - 60 GALLON CAPACITY
 80 - 80 GALLON CAPACITY
 100 - 100 GALLON CAPACITY
 120 - 120 GALLON CAPACITY 1
 150 - 150 GALLON CAPACITY 1
 200 - 200 GALLON CAPACITY 1
 250 - 250 GALLON CAPACITY 1
 300 - 300 GALLON CAPACITY 1
 500 - 500 GALLON CAPACITY 1

SS - ADD THIS SUFFIX FOR STAINLESS STEEL

NOTE 1:
 ONLY AVAILABLE IN JIC STYLE

PUMP
 SPECIFY A PUMP

FLUID
 O - PETROLEUM BASE OIL
 WG - WATER GLYCOL
 PE - PHOSPHATE ESTER
 X - SPECIAL

VALVES
 OMIT - NONE
 V1 - 1 VALVE
 V2 - 2 VALVES
 V3 - 3 VALVES
 V4 - 4 VALVES
 V5 - 5 VALVES
 DM* - DRILLED MANIFOLD

OPTIONS

(OTHERS AVAILABLE, USE QTY. PREFIX FOR ALL CODES)

S - SUCTION STRAINER
EPC* - EXTRA PRESSURE CONNECTION
ERC* - EXTRA RETURN CONNECTION
BV - LP BALL VALVE
PR - PRESSURE GAGE
GNV - GAGE SHUTOFF
GS - GAGE SNUBBER
NV - NEEDLE VALVE
HFBV - XHP BALL VALVE
LPC - CHECK VALVE, 5 PSI
HPC - CHECK VALVE, 65 PSI
SPRV - SUBPLATE WITH RELIEF VALVE
RBF - RETURN FILTER
PBF - PRESSURE FILTER
PS - PRESSURE SWITCH
ACC - ACCUMULATOR
W - WATER COOLER
WR - WATER MODULATING VALVE
IH - IMMERSION HEATER
A - AIR RADIATOR
AE - ELECTRIC FAN RADIATOR
JIC - TERMINAL BOX
MS - MOTOR STARTER
STO - SOLENOID/SWITCH WIRING CORD
COND - SOLENOID/SWITCH WIRING SEALTITE
MW - MOTOR WIRING
DH - FULL ENCLOSURE
DP - DRIP PAN

ELECTRIC MOTOR CODE

FACE TYPE	MOTOR MOUNT	SHAFT	HP	RPM	ENCLOSURE	VOLTAGE
09 - 4 1/2" C'FACE	OMIT - FOOT MOUNT	OMIT - MALE KEYED SHAFT	E - 1	1 - 1000	1 - ODP-SE 2	01 - 115/230/60/1
06 - 8 1/2" C'FACE	V - VERTICAL MOUNT	CC - CLOSE COUPLED	F - 1 1/2	2 - 1200	2 - TEFC-SE 2	02 - 110/220/50/1
05 - 10 1/2" C'FACE			G - 2	3 - 1440	3 - DDM-SE 2	03 - 230/460/60/3
08 - 12 1/2" C'FACE			H - 3	4 - 1800	4 - EXP-SE 2	04 - 220/440/50/1
04 - 16" C'FACE			J - 5	5 - 2875	9 - CP-SE 2	05 - 208/60/3
07 - NONE			K - 7 1/2	6 - 3600		06 - 200/50/3
			L - 10	7 - 870		07 - 380/60/3
			M - 15			08 - 380/50/3
			N - 20			09 - 575/60/3
			P - 25			10 - 575/50/3
			Q - 30			
			R - 40			
			S - 50			
			T - 60			
			U - 75			

ADDITIONAL INFORMATION REQUIRED

- HYDRAULIC SCHEMATIC SHOWING ALL COMPONENTS ON UNIT
- ENVIRONMENTAL CONSIDERATIONS
- DUTY CYCLE IF OTHER THAN CONTINUOUS
- PAINTING REQUIREMENTS
- ANY ADDITIONAL CONSTRUCTION CONSIDERATIONS

NOTE 2:
 ODP=OPEN DRIP PROOF
 TEFC=TOTALLY ENCLOSED FAN COOLED
 DDM=DIRTY DUTY MOTOR
 EXP=EXPLOSION PROOF
 CP=CHEMICAL PROCESS
 SE=SINGLE END MOTOR



Issued: 05/02
 DWC_HPU.doc