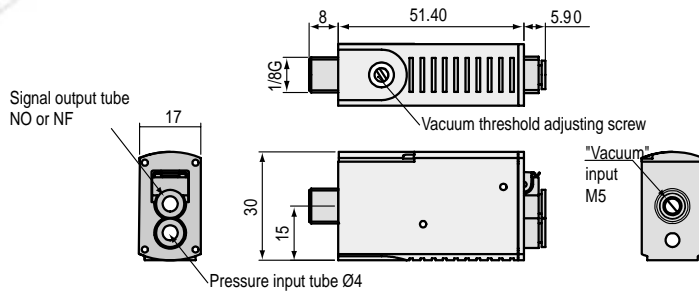


# Pneumatic vacuum switch, series PSE 100 PK



## Applications :

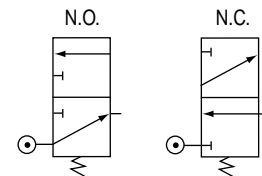
The vacuum switch with **pneumatic** output, in series PSE 100 PK, allows the vacuum level in the system to be checked by means of a **patented** system.

Thanks to its high precision it is particularly suitable for the control of micro-leaks and the control of vacuum volumes of more than 1 litre.

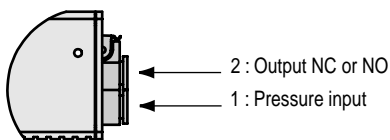
This vacuum switch is available in two versions: N.O. **version** recommended for the «air saving» function on a venturi and N.C. **version** for the «**sa-**fety» function (part present, etc.) and «**grafcet signal**».

## Specifications :

Models	Two versions: N.O. and N.C.
Compatible fluids	All non-corrosive, non-lubricated gases
Operating pressure	2 to 6 bars
Adjusting range	NC : -250 to 830 mb - NO : -350 to -880 mb
Accuracy	+/-10%
Hysteresis	NC : 10 mb - NO : 200 mb
Repeatability	< 3% of whole range
Maximum work rate	30 cycles per minute
Authorized overpressure	2 bars (destructive at 5 bars)(on vacuum port)
Mechanical endurance	5 x 10 <sup>6</sup> operations
Materials	Body: Polyacetal - vacuum sensor: nitrile diaphragm
Weight	32 g
Temperature	-10°C to +80°C
Flow rate at 6 bars	66 Nl/min



## Pneumatic connection:

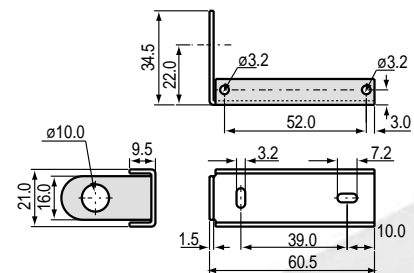


## Special design:

On request, factory preset version  
Optional fitting GVO on the GVP venturi range.

## Mounting of vacuum switch:

Clip reference **PSE.F.**



**PSE 100 PK** ————

1 : Version	
NO	Normally open (N.O.)
NC	Normally closed (N.C.)

Dimensions and characteristics may be modified without notice.