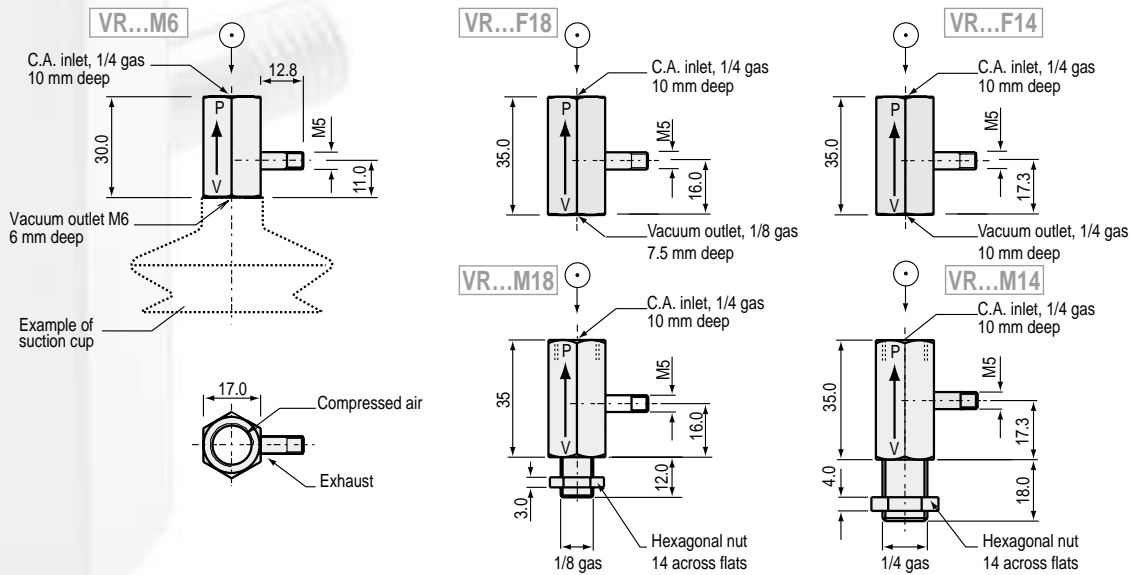


Coupling venturis, series VR



Applications:

The main advantage of the Coupling Venturi, series VR, is its **direct fitting on the suction cup** which allows simpler connection.

By integrating the VR type venturi in the suction cup, we obtain a **localized vacuum** and, therefore, the possibility of obtaining multiple independent gripping, **even when there are no materials detected**.

It is also possible to supply vacuum to two or more suction cups using a 1/8 Gas or 1/4 Gas tee fitting.

Characteristics:

Characteristics	Nozzle ø	Air consumption	Maximum vacuum	Drawn-in air	At air pressure
Models	mm	NI/min	%	NI/min	bar
VR 05	0.5	12	87	7	5
VR 07	0.7	21	90	14	5
VR 09	0.9	36	90	21	5

Specifications:

Compressed air	Filtered, non-lubricated, pressure 2 to 6 bars
Temperature	-10 to 80°C
Material	Anodized aluminium body, brass nozzle
Weight	15 g

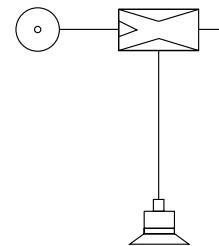
Fitting on spring system:

- Spring system, series TS3, available strokes: 10, 30, 50, 70 mm, page 90.
- Anti-rotation spring system, series TSO, page 91.
- Ball joint systems, series IMU, page 93.

Special designs:

Possibility of special materials such as stainless steel and plastic, as per work specifications, and special characteristics such as suction flow rate or vacuum level.

On request for model F18, provision of an auxiliary vacuum coupling M5 for connection of a vacuum switch.



VR — 1 — 2

1: Nozzle diameter

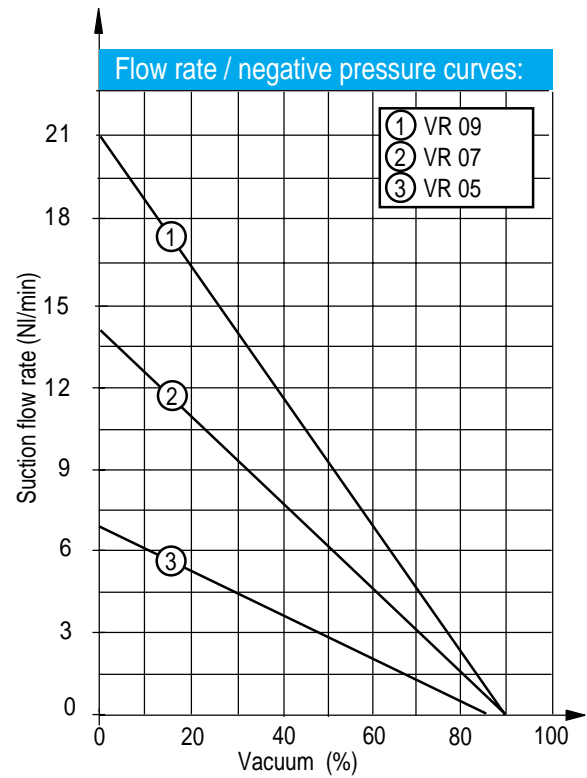
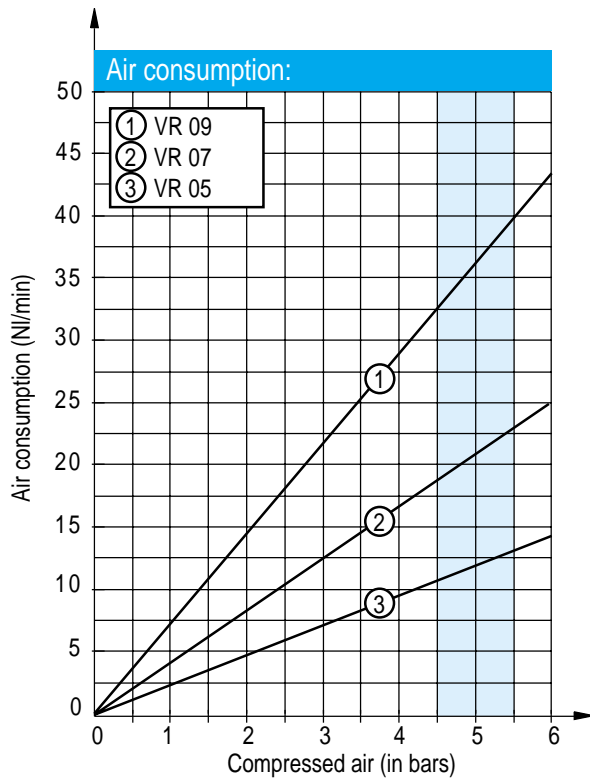
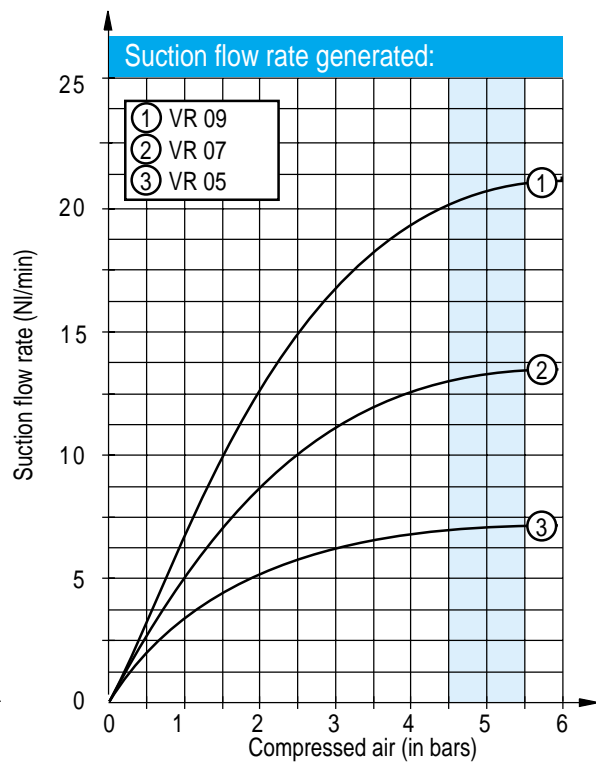
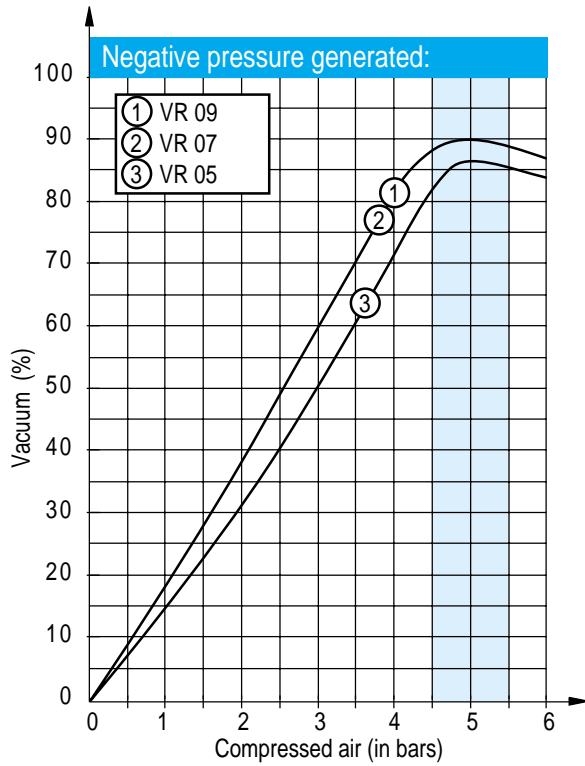
05	0.5 mm
07	0.7 mm
09	0.9 mm

2: Vacuum outlet

M6	M6, female
M18	1/8 gas, male
M14	1/4 gas, male
F18	1/8 gas, female
F14	1/4 gas, female

Curves and characteristics on page 15.

Curves for coupling venturis, series VR



Dimensions and characteristics may be modified without notice.

The curves shown above indicate the mean values of the capacities of our products.