

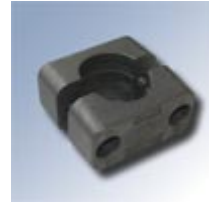
# Zubehör accessories

easymotion accessories

## Mounting clamps:

Order number: AC-BS1

- bracket to mount the A-Cylinder on the application
- distance between the boreholes: 40 mm
- 2 clamps per A-Cylinder recommended



## Hydraulic tube:

Order number: AC-SC1

- diameter 4 mm
- max length per cylinder 5 m
- ratio between the single tubes max 5:1
- min bending radius 50 mm



## Foot:

Order number: AC-FU1

- foot for positioning of the A-Cylinder
- height adjustment possible



## Refill-Kit:

Order number: AC-KIT

- 250 ml Bansbach hydraulic-oil
- Refill syringe for easymotion



## Bracket 900BA1SB

- Fitting connecting parts: AB/ZB and AW/ZW
- max force: 250kg



## Bracket 900BA2SB

- Fitting connecting parts: AB/ZB and AW/ZW
- max force: 250kg



## Bracket 900BA6BO

- Fitting connecting parts: AB/ZB and AW/ZW|
- max force: 600kg

